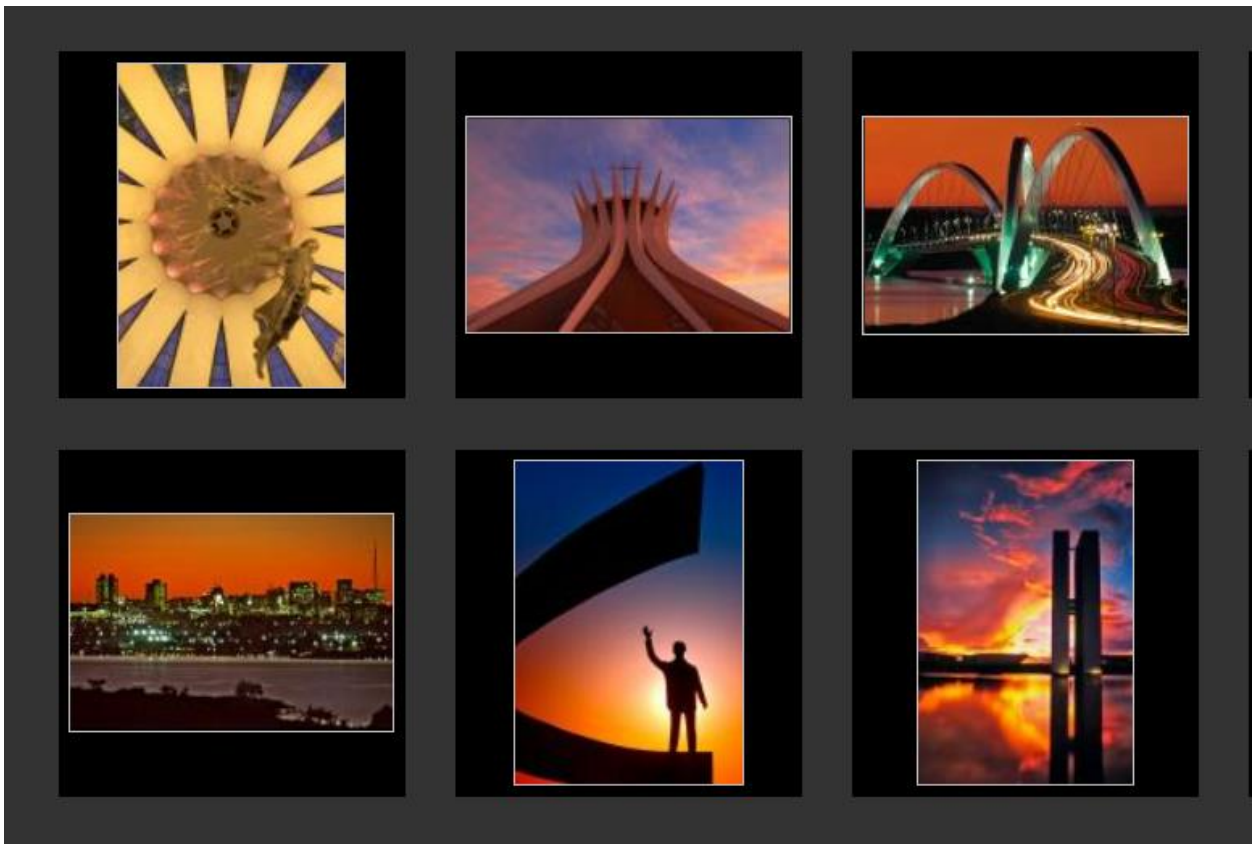




WELCOME TO BRASÍLIA

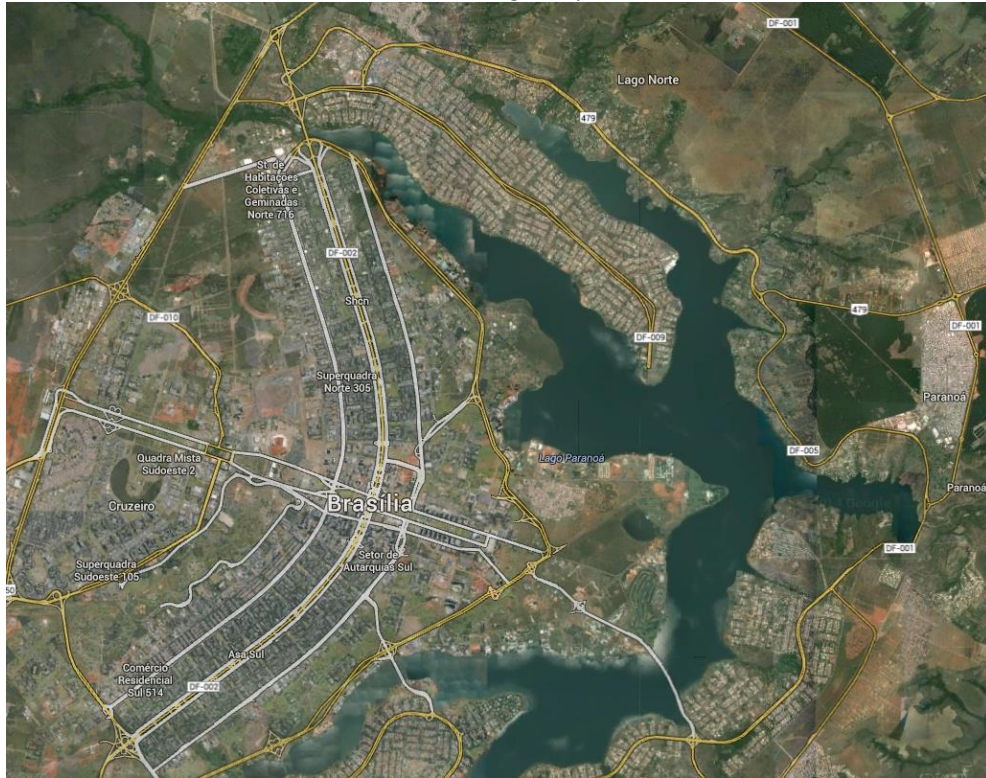


Brasília Country Office
June 2023



Brasília maps: Pilot Plan, Paranoá Lake

Source: Google Maps





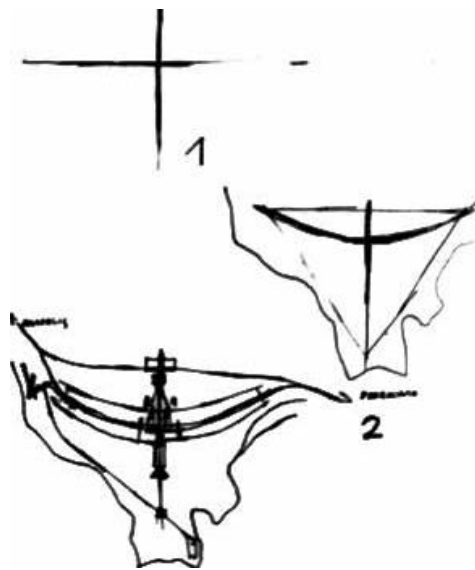
WELCOME TO BRASÍLIA

My impression is that I am landing on a different planet than the Earth.

Yuri Gagarin, upon his arrival in Brasília

*"I hope that Brasília becomes a city of happy men,
men who feel life in all its fullness, in all its fragility"*

Oscar Niemeyer

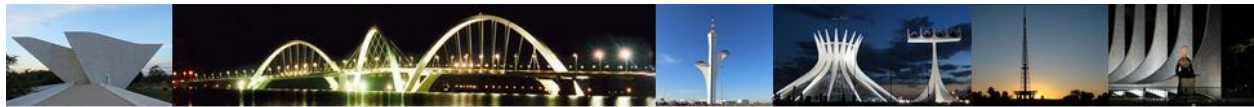


Brasília may not resemble the Earth, but it is not devoid of earthly pleasures.

This Guide is a publication meant to help you make the best of the city's cultural opportunities.

The information is drawn from various sources;
although every effort has been made to ensure accuracy,
we strongly recommend that you check times,
prices and arrangements before leaving home.

We welcome your contributions.



Security Contacts

Office contacts (one should be 24/7)	Contact or observation	Phones
Fire	193	193
Police	Batalhão Rio Branco (24/7)	190 / +55 61 3910-1628
Medical Emergency Coordinator	Fabiana Imperatriz	+55 61 99966-8948
Alternate Medical Emergency Coordinator	Luisa Pelucio Macieira de Sousa	+55 61 99906-1404
Security Focal Point	Roberto Silva	+55 61 99971-4860
Alternate Security Focal Point	Luisa Pelucio Macieira de Sousa	+55 61 99906-1404
Visiting Mission Coordinator	Bruna de Mello	+55 61 98378-9832
Country Office Director	Johannes Zutt	+1 202 817 6933
Medical Emergency		
Ambulance – SAMU	For public hospitals only	192
WMed UTI Móvel (Private)	Condominium (Private)	+55 61 3329-5300
Hospital Santa Lúcia – SHLS 716	Private Hospital - Cigna	+55 61 3445-0000
Hospital de Base – 24/7	Public Hospital – Trauma	+55 61 3315-1446 / 3315-1549
Private Doctor – 24/7	Dr. Plínio Brant	+55 61 99981-3013
Out of country WB/IFC/IMF Emergency		
Regional Security Advisor	Fernando Viana	11 99117 2984 / +1 202 280-5630
SOC (Security Operations Center)	24/7	+1 202 458 8888
Watch Office SMS - 24/7	SMS	+1 202 460-9244

World Bank Group. [Welcome to Brasília 2018.](#)
Brasília Country Office, Brasília, May, 2018.

Country Director – Martin Raiser
Country Operations Adviser – Doina Petrescu
Administrative Officer – Roberto Lima Ferreira Silva
Edition, layout: Hélio Sato
Revision: Julio Cesar Muniz & Adriana Narciso
Photographs: Vânia Amadeu, Roberto Silva and public sites

SCN Q. 2 lote A. 7º andar - Edifício Corporate Financial Center
CEP 70712-900 - Brasília, DF – Brazil
Phone: +55 61 3329-1000

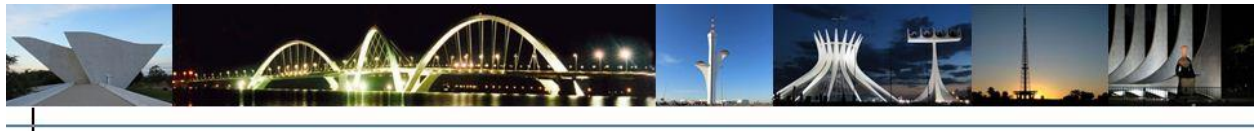


Table of Contents

Find Things to do in Brasília

Brasília, a Brief Background

Federal District
Pilot Plan Map
Brasília's Pioneers
Foundation Stone
Pilot Plan Axis
Monumental Axis
Ministries Esplanade
Television Tower
Mané Garrincha Brasília National Stadium
JK Memorial
National Pantheon Tancredo Neves
Three Powers Square
Planalto Palace
Supreme Court
National Congress
Itamaraty Palace
Republic Cultural Complex
Sala Funarte
Ulysses Guimarães Convention Center
Planetarium
Cathedral
Alvorada Palace

Other Attractions in Brasília

Dom Bosco Sanctuary
Dom Bosco Chapel
Catetinho
City Park
Digital Tower
Botanical Gardens
National Park Água Mineral
Paranoá Lake
JK Bridge
Other Bridges
Pontão
University of Brasília
Zoo

The Brazilian Way – Protocol

Brazilian Manners
Conversation
Greetings
Time
Food and Drink
Breakfast (café da manhã)
Lunch (almoço)
Dinner (jantar)
Cafezinho
Eating out
Invitations
Brazilian Churrasco
Weddings
Parties
Dress Code
Curiosities of Brazilian Culture

Cultural Brasília

Art Galleries, Cultural Centers, Libraries and Museums
Music in Brasília
Claudio Santoro National Theater
Clube do Choro de Brasília
Thomas Jefferson House
The Brasília School of Music
Music Lessons

LIST OF SERVICES

ATM Machines
Banks
Book Stores
Cable TV & Internet Access Providers
Movie Theaters
Clubs
Domestic Help and Swimming Pool Cleaner
Embassies in Brasília
Fitness: Dance, Gym, Personal Trainers, Pilates and Yoga
Hair Dresser & Manicure



Health & Medical Specialties
Dentist & Orthodontist
Doctors, Clinics, Laboratories
Hospitals, Image Clinics & Emergency
Pharmacies
Home and Decor

Lawyers

Legal Services
Notary
Pets & Vets
Pet Transportation
Portuguese Classes
Real Estate
Religious Services
Rental – Cars

Restaurants, Food business

Buffet & Catering Services
Cheeses
Frozen Food (take out)
Fruits & Vegetables
Home Delivery
Ice Cream

Liquor Stores and Delicatessens
Nightclubs and Pubs
Natural Products
Party Decoration and Supplies
Schools
Schools, Offices, Computer and Art's
Supplies
Shopping Malls
Supermarkets
Taxi
Translation & Interpretation

**Tourism, Leisure and Out Doors Activities
in Brasilia**

Fairs – Antiques, Arts and Crafts
Feira da Lua
BSB Mix
Tower TV Fair
Guara Fair
Picnic Fair
Bikers, Runners and Walkers
Weekend Trips
Ecological and Historical Tourism
Useful Words and Phrases



Things to do in Brasília

Only a few years ago, people would say “There’s nothing fun to do in Brasília!” Those days are gone! Discover a new Brasília on this Welcome Guide. It offers a variety of activities to please everyone.

To help you get started, we compiled a list of useful websites. Please, check them out. You will be surprised with all the things you can do in Brasília:

Brasília Links for agenda

<http://www.achabrasilia.com>
<http://deboa.com/>
www.chefsclub.com.br/restaurantes/brasilia
<https://dicasdacapital.com.br/>
<http://df.divirtasemais.com.br/>
<https://foursquare.com/>
www.lagosul.com.br/
<http://guia.melhoresdestinos.com.br/brasilia-57-c.html>
www.viibra.gov.br

More Links

Animal Adoption

www.proanima.org.br/

Brazil’s History

www.geographia.com/brazil/brazilhistory.htm

Domestic Employees

www.planalto.gov.br/ccivil_03/Constituicao/Emendas/Emc/emc72.htm

http://portal.mte.gov.br/trab_domestico

CEP (Zip Code)

www.cep.com.br

Newspapers on line

<https://www.correiobraziliense.com.br/>

www.jornaldebrasilia.com.br

<http://www.onlinenewspapers.com/>

Pet Transportation

www.gov.br/agricultura/pt-br/assuntos/vigilancia-agropecuaria/animais-estimacao

www.cdc.gov/importation/traveling-with-pets.html

www.triplan.com.br/viajando_com_seu_bichinho_de_est.htm

www.state.gov/m/fsi/tc/c10442.htm

Phone Directory Brazil

www.achei.com.br/

Restaurants in Brasilia

<https://veja.abril.com.br/entretenimento/o-melhor-da-gastronomia-de-brasilia-veja-comer-beber-2018-2019/>

Road Conditions

www.dnit.gov.br

www.waze.com

Stolen Items Notification

<http://delegaciaeletronica.pcdf.df.gov.br/>

World Clock

www.timeanddate.com/worldclock



Brasília, a Brief Background

Brasília was inaugurated by President Juscelino Kubitschek de Oliveira (known as JK) on April 21, 1960, after 1000 days of construction. Brasília was inaugurated with the famous slogan: "50 years in 5". The construction of Brasília began in 1956. It was built in Brazil's geographic center to replace Rio de Janeiro as the capital to foster the development of the country's vast land. The location is symbolic of national integration, and it is also the materialization of Dom Bosco's dream.

On August 30, 1883, Dom Bosco, a Salesian priest in Italy, who became a Saint, dreamed that a utopian city would arise to be a prosperous land of honey and milk. His dream defined exactly the location of Brasília's latitude and longitude, 15°48'S and 47°53'W.

In 1987, the city was proclaimed a World Cultural Asset by UNESCO, and to this day it remains the sole modern asset in UNESCO's list. Brasília was planned by architect/city planner Lúcio Costa based on four concepts:

- The monumental scale was conceived to actualize the city's role as the country's capital. The Monumental Axis (Eixo Monumental) houses the governmental buildings.
- The residential scale sought to provide a new way of life unique to Brasília, and is embodied by the Residential-Motorway Axis" (Eixo Rodoviário).
- The convivial scale is embodied by Brasília's center, built around the intersection of the Monumental and Residential Axes". Rodoviária (Brasília's main bus terminal) is the ground zero of Brasília.
- The bucolic scale is propagated throughout the city, making Brasília a park-city".

Physically, the Federal District comprises an area of some 2,240sq miles (5,800,000 km²) and it is a somewhat arid highland approximately 3,800 feet above sea level.

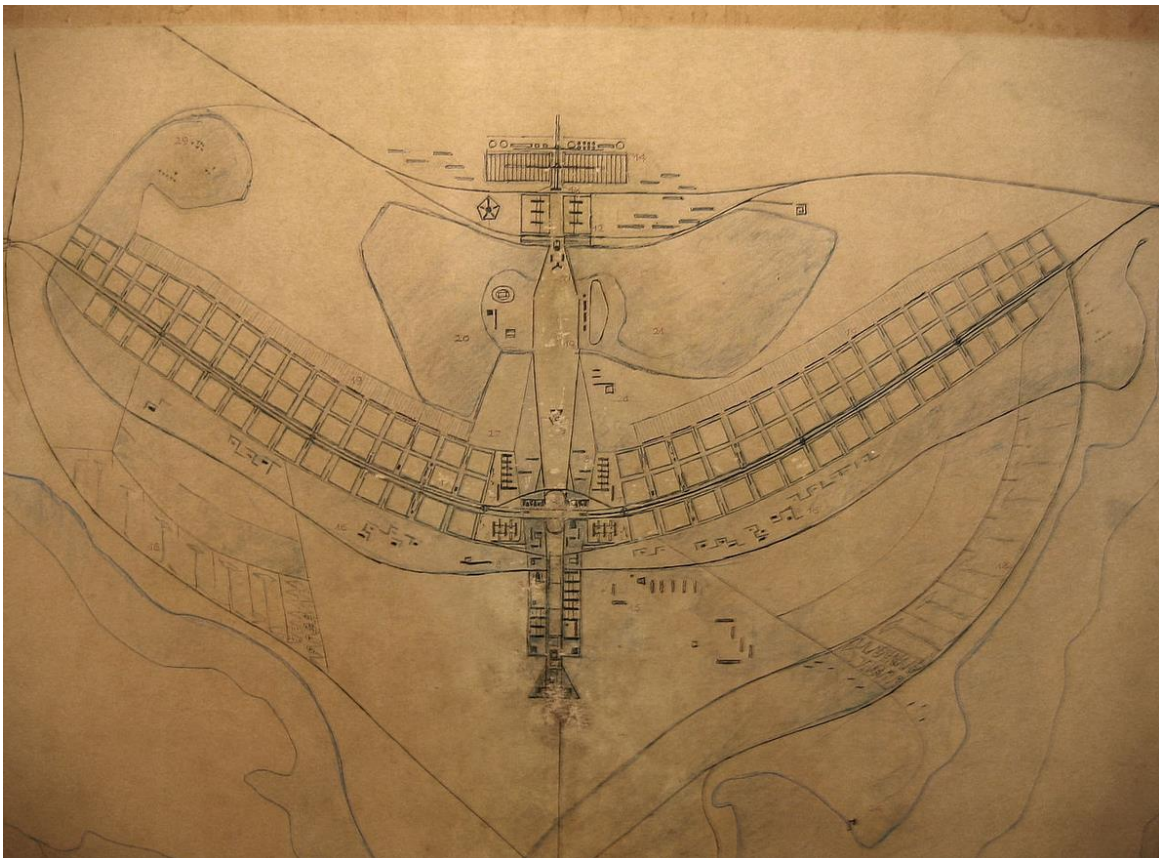
Climatically, it has two seasons: the rainy season (from October to March), which in some months coincides with Brazil's Spring and Summer, and the dry season, which is mostly during Fall and Winter. Neither season is severe due to the combination of high altitude and proximity to the



Equator. Be aware that August and September are months with very low humidity and asks for plenty of liquid ingestion (so drink plenty of liquids).

Federal District

The total population of the Federal District is currently 3,013 mi with more than 800,000 only in Brasília metropolitan area (called Plano Piloto) and the remainder in the administrative regions (which used to be called *Cidades Satélites*).



[Pilot plan of Brasília](#), planned by city planner [Lúcio Costa](#).



Brasília's Pioneers

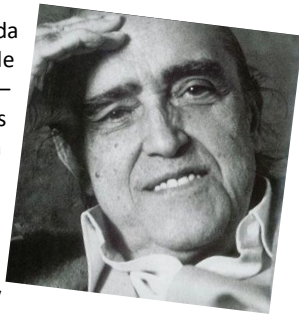


Juscelino Kubitschek de Oliveira (September 12, 1902 - August 22, 1976), also known as JK, was President of Brazil from 1956 to 1961. He was born into a very poor family in Minas Gerais.

Kubitschek became a medical doctor. He was elected to the House of Representatives of Brazil in 1934. He was appointed mayor of Belo Horizonte in 1940. In 1955, he ran for president with the slogan "fifty years in five" and won. He was sworn in on January 31,

1956. Kubitschek's launched the "Plan of National Development", whose main goal was the construction of a new capital, Brasília, in the center of the country to stimulate the expansion of the Brazilian economy and the integration of the national territory. For more information: www.memorialjk.com.br

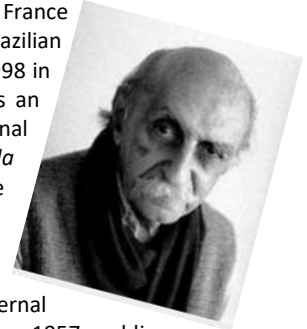
Oscar Ribeiro de Almeida **Niemeyer** Soares Filho (Rio de Janeiro, December 15, 1907 – December 5, 2012), known as Oscar Niemeyer, was a Brazilian architect. He graduated at the National A National School of Fine Arts (*Escola Nacional de Belas Artes*). He is one of the key



figures in the development of modern architecture. Niemeyer was best known for his design of civic buildings for Brasília, as well as his collaboration with other architects on the United Nations Headquarters in New York City. He had more than 600 projects throughout the world. His exploration of the aesthetic possibilities of concrete and his curved lines were highly influential on the architecture of the late 20th and early 21st centuries. Niemeyer worked over 78 years and died in his home town, Rio de Janeiro, at the age of 104.

For more information: www.niemeyer.org.br

Lúcio Costa was born in Toulon, France on February 27, 1902, son of Brazilian parents, and died on June 13, 1998 in Rio de Janeiro. He graduated as an architect in 1924 from the National School of Fine Arts (*Escola Nacional de Belas Artes*) in Rio de Janeiro.



Lucio Costa is best known for his urban plan for the new capital of Brasília, located in Brazil's internal land, having won the job in a 1957 public competition. Costa's *Plano Piloto* (Pilot Plan) for Brasília suggests an airplane-shaped design for Brasília. Costa was responsible for Brasília's layout. It is Costa's "utopian" project, planning a city for considerable quality of life, in which the citizens should live in wooded areas with sporting and leisure structure, flanked by small commercial areas, bookstores and cafés. www.casadeluciocosta.org/

Roberto **Burle Marx** (São Paulo, August 4, 1909 - Rio de Janeiro, June 4, 1994. With an academic background in Architecture, he had a passion for music and plants since childhood. In the 60's Burle Marx received an invitation from Lucio Costa to design the gardens of the governmental buildings in Brasília. He was responsible for landscaping the green areas of the embassies of Germany, the United States, Iran and Belgium. He brought buriti palms and cerrado plants to ornate the palaces throughout Brasília. Considered one of the greatest landscapers of the 20th century, as well as Oscar Niemeyer and Lucio Costa, Burle Marx made a name for himself in the history of the Federal Capital, composing gardens as works of art. He also worked in the gardens of the Embassy of Brazil in Washington (United States). For more information:

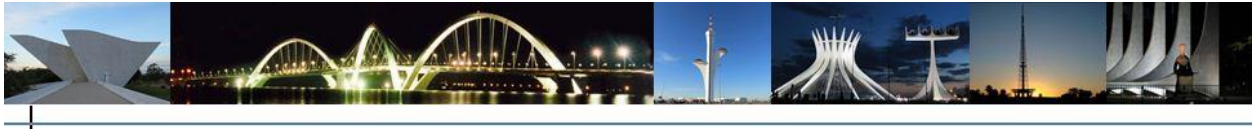


www.parqueburlemarx.com.br



Athos Bulcão was born in Rio de Janeiro, on July 2, 1918, and lived for 90 years, having died in Brasília on July 31, 2008. For the love of art did Athos leave medical school in 1939 and from that date, he devoted himself entirely to the Arts.

In 1958, enthusiastic about Juscelino Kubitschek's dream, he moved to the new capital. Along with Oscar Niemeyer, he gave light, color, and life to Brasília. It is



possible to see his work spread throughout Brazilian city buildings, such as: National Theatre façade; Itamaraty Palace; Memorial JK; Brasília Airport; Palácio do Jaburu; House of Representatives; Presidential Palace; Our Lady of

Fatima Church (at 307/308 South) – Igrejinha; UnB; City Park; the flower market, schools, private buildings. For more information, see Athos Bulcão Foundation. <http://www.fundathos.org.br/>

Foundation Stone



As part of the movement towards the construction of Brasília, in 1922 a decision was made to lay the city's foundation stone. A caravan was sent to Mestre d'Armas (now Planaltina) in August of that year, and the obelisk was built in a single day.

It is 3¾ meters tall and its faces are aligned with the cardinal points. The

base of the monument has 33 stones, one for each year since Brazil had become a republic (1889-1922). Seven kilometers from the obelisk is a Brazil's true geodesic center. Although hard to get to (it is situated on the top of the Centenário Hill near Planaltina) this relatively unknown monument is an interesting site for those who like to see history firsthand.

Pilot Plan Axes



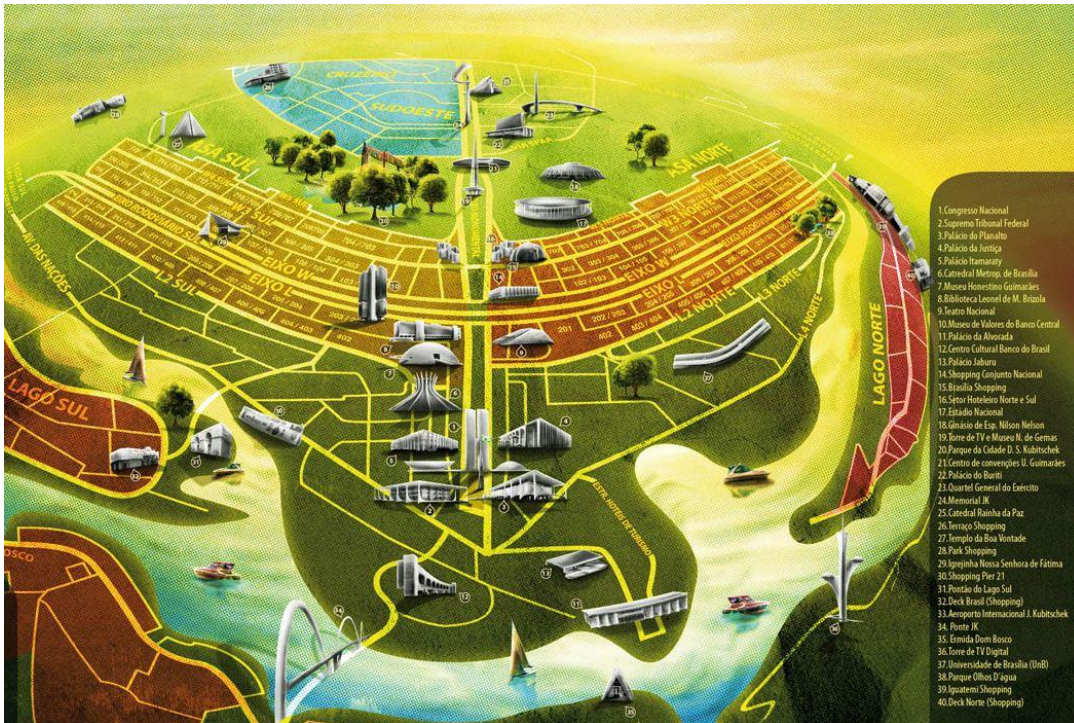


Illustration from Mapa turístico de Brasília

Source: www.behance.net/gallery/Guia-Abrasil-DF-201112/3795371

Plano Piloto (Pilot Plan) comprises 2 axes: Motorway Axis (*Eixo Rodoviário*) and Monumental Axis (*Eixo Monumental*), which divide Brasília into North, South, East and West. They determine the neighborhood units in *Superquadras* (Superblocks). Each *Superquadra* has about twelve apartment buildings. Each *quadra* (block) is framed by strips of landscaping and most of the apartment buildings stand on pillars to provide a sense of light and space.

Since the city was developed at the advent of motor transport, pedestrians were not taken much into consideration. In the original plan, there were no traffic lights and all cars moved over overpasses, through tunnels, and around traffic circles. Today with 800 thousand people living in the *Plano Piloto*—this plan had to be modified.

Distances are staggering, and pedestrians must walk far to move from one point to another. The high-speed avenues are especially dangerous to cross. Nowadays there is a subway with a line completed for the South Wing and continuing to the major satellite cities of Taguatinga and Ceilândia. Public transportation is plentiful, but automobiles dominate life in Brasília.



Monumental Axis (*Eixo Monumental*)

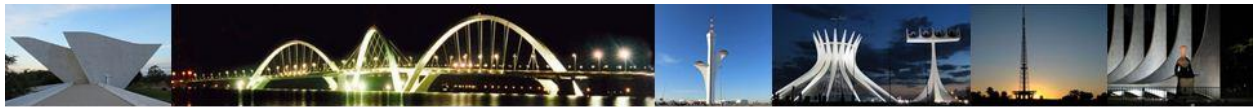


The Monumental Axis' first session is the Esplanade of the Ministries. The Monumental Axis ("*Eixo Monumental*" in Portuguese) is a central avenue in Brasília's city design.

The city of Brasília is the combination of the talents of architect Oscar Niemeyer and city planner Lúcio Costa. Niemeyer designs all the main buildings. Costa planned the very layout of the city, the "*Plano Piloto*", choosing to make it look, from above, like a swept-wing plane, a symbol of progress.

The residential and business areas are located along the "wings" of the plane.

The *Eixo Rodoviário* (Residential / Motorway Axis) goes across one wing to the other, parallel to W3 Avenue. The letter W stands for West and L for East, respectively. Along the "body" of the plane, or *Eixo Monumental*, are Government offices, administrative buildings, cultural and banking areas, hotel and recreational centers. At the intersection of these two axes is the central bus station, called *Rodoviária*, truly the center of Brasília in its early years, as workers and their families arrived from all parts of Brazil, seeking opportunities in the fledgling city.



Esplanade of the Ministries (*Esplanada dos Ministérios*)

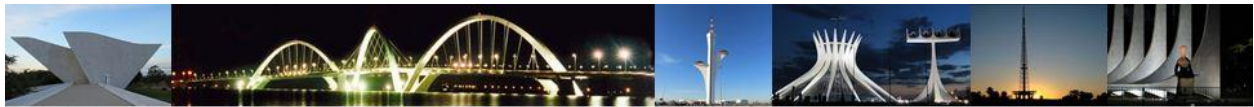


The avenue begins from the National Congress of Brazil. Next is the section known as "*Esplanada dos Ministérios*", as it is surrounded by the buildings of the ministries. Up ahead are the Cathedral, the Cultural Complex of the Republic (with the Museum of the Republic and Brasília National Library), *Rodoviária* (Central Bus Station), TV Tower, the TV Tower's street fair, Funarte's circular theater, *Clube do Choro*, Ulysses Guimarães Convention Center, Buriti Palace, the Court of Justice, JK Memorial, and last the Rainha da Paz Church.

Television Tower (*Torre de TV*)



The TV Tower is a good place to start a tour around Brasília, due to its central location and the elevated view. The tower is 224 meters/735 feet tall and the top is 4,403 feet above the sea level. It has an elevator, which takes visitors to enjoy a panoramic view of the city. Near the base of the tower, a crafts fair takes place on weekends and holidays, featuring handicrafts, shoes and other wood and leather items. Location: Eixo Monumental. During regular times, the panoramic elevator opens daily from 9 a.m. to 7 p.m. There is a Musical Water Fountain in front of the TV Tower. From time to time there are FREE events between the lawn of the TV Tower and the Musical Water Fountain (the water fountain plays in sync with the music). It is very entertaining.



Brasília National Stadium (*Estádio Nacional de Brasília*)



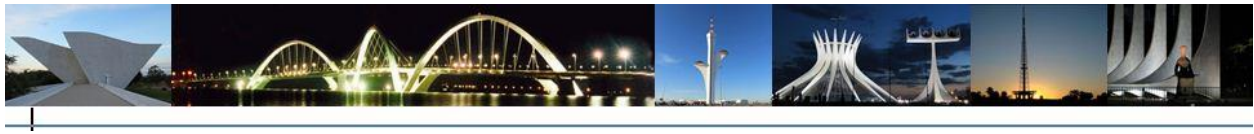
Estádio Nacional Mané Garrincha is a multi-purpose stadium in Brasília. It was named after the football legend Mané Garrincha, who won the 1958 and 1962 World Cups with the Brazil national team.

The stadium can accommodate 70,064 people. It was inaugurated in 1974. It was demolished so that a new Mané Garrincha could be constructed, which hosted a few games of the 2014 World Cup. It was re-inaugurated on May 18, 2013 after the reconstruction for the FIFA Confederations Cup. It is also being used to host other large events. Location: Eixo Monumental. Asa Norte, Brasília, DF. arenabsb.com.br/

JK Memorial



Beyond the Television Tower and towards the Western end of the Monumental Axis is a monument, mausoleum and museum dedicated to the founder of Brasília, President Juscelino Kubitschek. Inaugurated in September 1981, the monument is a tall pole topped by a statue of Kubitschek inside a crescent moon. The Memorial was built on the site of Brasília's first mass, and its circular chapel contains Kubitschek's mark. The museum's entrance goes through an underground area designed by Niemeyer. It has rooms containing the original plans for the city,



Kubitschek's personal library, his clothes and medals, and pictures and documents of Kubitschek from childhood to his last days.

There is also an auditorium for 310 people, where films about the construction of Brasília are featured regularly. Visiting hours: Tuesday through Sunday 9:00 a.m. to 6:00 p.m. Phone: +55 61 3225-9451/ 3226-7860/ 3225-9451. There is an admission fee. <http://www.memorialjk.com.br/>
www.memorialjk.com.br/

National Pantheon Tancredo Neves



The National Pantheon Tancredo Neves was built to celebrate Tancredo Neves, who died on the eve of his presidential inauguration in 1985, the first civilian president after 20 years of military rule. The monument was designed by Oscar Niemeyer in the shape of a dove to represent freedom and democracy. It is located on the Eastern end of the Plaza of the Three Powers (*Praça dos Três*

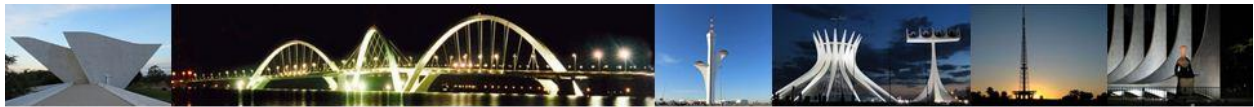
Poderes).

Plaza of The Three Powers (*Praça dos Três Poderes*)



The Plaza of the Three-Powers (*Praça dos Três Poderes*) is a wide space which houses all three branches of government. The plaza is located at the eastern end of the Monumental Axis and is the "airplane cockpit" in Lúcio Costa's grand design of the city. Around the plaza are located the Presidential Palace (*Palácio do Planalto*), the National Congress (*Congresso Nacional*), and the Supreme Court (*Supremo Tribunal Federal*), representing the executive,

legislative and judiciary powers. In between these imposing buildings there are several monuments and memorials, including the JK Museum, the National Pantheon and various sculptures: the Two Candangos (*Dois Candangos*), by Bruno Giorgi; Justice, by Alfredo Ceschiatti,



and the Dovecote (known to residents as “Pombal de Dona Sarah” - President Kubitschek’s wife), created by Oscar Niemeyer.

Plateau Palace (*Palácio do Planalto*)



The four-storey *Palácio do Planalto* (Palace of the Plateau) can be seen on the left-hand side of the plaza as one looks towards the lake. This is the seat of the government’s executive branch and has a marble and glass frontage designed by Oscar Niemeyer, who used curved and straight lines to obtain an especially artistic effect. The reception is located on the ground floor. The first floor contains the meeting and reception halls as well as banquet halls. The President’s office is located on the second floor, and the Civil and Military Cabinet offices are on the third floor. Only on special occasions is the Palace open to public visitation on week-days.

Visiting hours: Sundays 9:30 a.m. to 2:30 p.m. Phone: +55 61 3411-1221.

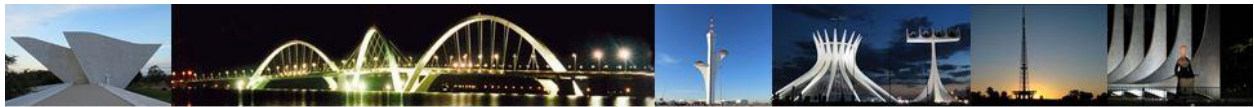
www2.planalto.gov.br/presidencia/palacios-e-residencias-oficiais/palacio-do-planalto

Supreme Court (*Supremo Tribunal Federal*)



Facing the Plateau Palace across the *Praças dos Três Poderes* is the *Supremo Tribunal Federal* (Supreme Court), with a monument to Justice in front of it. The building has the structural lightness which characterizes much of Niemeyer’s work. The main courtroom and meeting rooms are located on the ground floor.

On the first floor is the Noble Hall, the Chief Justice’s office, the Council Hall and the offices of the Attorney General. The second floor houses a library with 80,000 volumes. Visitors are required to wear ties (for men) or dresses/skirt or suits with blazer (for women) to enter in a formal session.



Location: *Praça dos Três Poderes.* Phone: +55 61 3217-3000.
www.stf.ius.br/portal/principal/principal.asp

National Congress

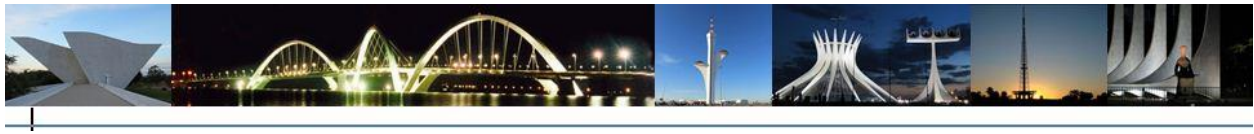


In the center, between the Supreme Court and the Planalto Palace, is the *Congresso Nacional* (National Congress). Its remarkable architecture makes it impossible to mistake it. It is composed of twin towers (administration), a concave saucer (Senate) and a convex saucer (House of Representatives). The towers were created to form an “H” for “humanity”. There are underground accesses to annex buildings on either side of the two roadways. The Senate and the House of Representatives are normally open to visitors.

The main building has two floors, a basement and the meeting rooms of the two houses. Congress has many cultural artifacts. The winter gardens were designed by Burle Marx, and the ceramic tiles by Athos Bulcão.

There is a Di Cavalcanti mural, an Alfredo Ceschiatti sculpture called the Angel, a Marianne Peretti panel and works by other artists. In the Senate there are various Athos Bulcão panels, a Ceschiatti sculpture called Woman, tapestries by Burle Marx, chairs designed by Le Corbusier, engravings by Jacques Madvol, lithographs by Maria Bononi, engravings by Rossini Perez and other art works. Congress is open every day from 9:30 a.m. to 5:30 p.m. to visitors, who are given a half-hour guided tour. Senate’s phone number: +55 613311-3388. Group visits: +55 61 3216-1771/1772.

www2.congressonacional.leg.br/visite

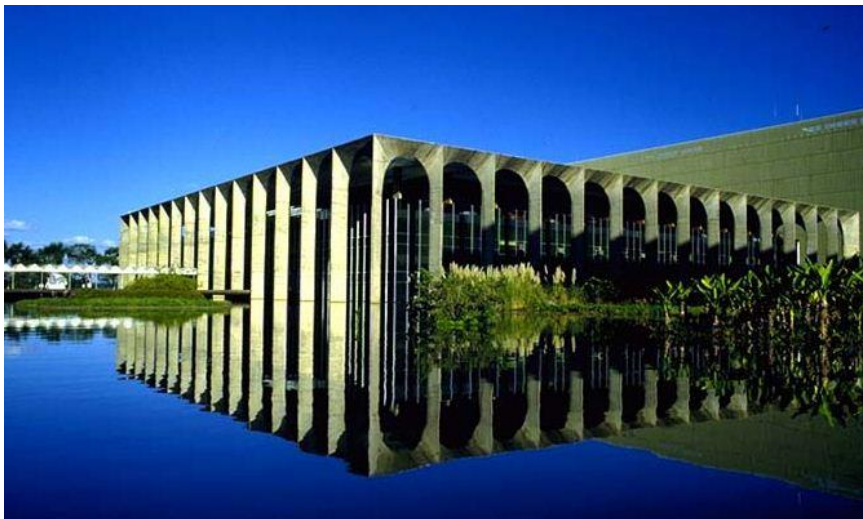


Itamaraty Palace

The Itamaraty Palace is the headquarters of the Brazilian Foreign Relations Ministry, it is located across the street from the Plaza's right side (considering the flag).

This is a square building with four frontages which are exactly alike, with a surrounding pool. There are sidewalks passing over the pool which give access to the building. Burle Marx landscaped the pool area with aquatic plants and shrubs. The ministry's symbol, Bruno Giorgi's sculpture "The Meteorite" stands out in the front.

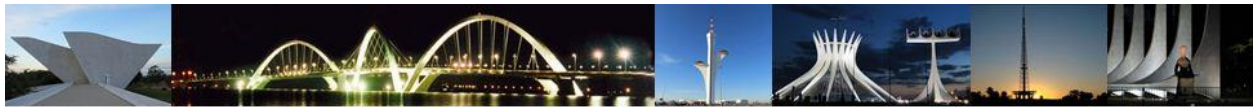
Inside there are important works of art. The sculpture "Meeting Point," by Mary Vieira, made of 230 mobile aluminum plates; "There are Leaves," by Zélia Salgado; and a marble wall with a relief



sculpture by Burle Marx, which works in harmony with the forms projected by Oscar Niemeyer. There are many other art objects in the big halls of Itamaraty, like the "Imaginary Painting" by Manabu Mabe, the sculpture "Metamorphosis" by Franz Weissman, and Alfredo Volpi's "The Vision of Dom Bosco" fresco. There

are also paintings such as the "Raft Fishermen and the Gauchos", by Portinari, as well as valuable furniture and rugs. Itamaraty Palace is located on the East end of the Ministerial Esplanade and can be visited every day from 9 a.m. to 5 p.m., although with a different schedule on weekends. Phone numbers: + 55 61 3411-6159 /3411-6148. Admission is free. Well worth visiting. Excellent guided tours in English. <http://www.itamaraty.gov.br/servicos-do-itamaraty/visitacao-ao-palacio-itamaraty-em-brasilia>

<http://www.itamaraty.gov.br/pt-BR/visite-o-itamaraty>



Cultural Complex of the Republic (*Complexo Cultural da República*)

The Republic Cultural Complex was inaugurated on December 15th, 2006. This area is part of the Esplanade of the Ministries. It comprises the National Museum Honestino Guimarães, the Leonel de Moura Brizola Brasília National Library – BNB, and a large open space between the two buildings, with water mirrors. Good place to hang out with your kids on Sunday afternoons. You can see the exhibitions at the museum and watch the skaters having fun, and sometimes attend some music event. See more information in the chapter referring to Libraries and Museums.



Funarte Hall (*Sala Funarte*)



Sala Funarte Cássia Eller

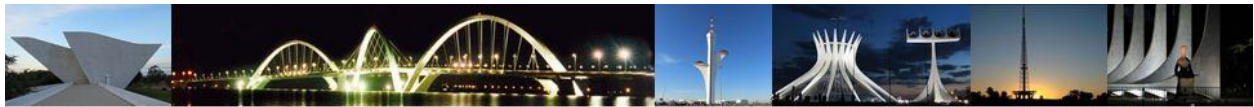
The National Arts Foundation (Fundação Nacional das Artes - FUNARTE) is the institution under the Federal Government responsible for the development of public policies that promote the visual arts, music, theater, dance and circus. Funarte provides scholarships and prizes, maintains movement of artists and cultural heritage programs, promotes workshops, publishes books, retrieves and provides collections, provides technical advice and supports cultural events in all Brazilian states and abroad. Funarte Hall is named Sala Cassia Eller in honor of an expressive musician who lived in Brasilia, who died in 2001. <http://www.funart.com.br/> www.funarte.gov.br

Ulysses Guimarães Convention Center

The Convention Center was designed by architect Sérgio Bernardes. In 1978, the Center went through a major overhaul. Conventions and exhibitions were already becoming an important factor of attractions of tourists to Brasília; the former cultural center was turned into a convention center.

In 1992, the center was named after Ulysses Guimarães, an important politician who died that year. The Convention Center has two wings, one for fairs and exhibits and other for conventions. The auditorium has capacity for 4,100 people.





Planetarium



The Planetarium was reopened in December 11th, 2013. The monument underwent restoration, which implemented the latest technologies. The restoration included adaptation of the building, acquisition of new technologies and redemption of old equipment: The Space master, was renovated and a new updated model, the Power Dome VIII, was installed. Currently, there are only two models of this device in operation, both in

Germany.

The dome projection has capacity for 82 people, with spaces for wheelchair users.

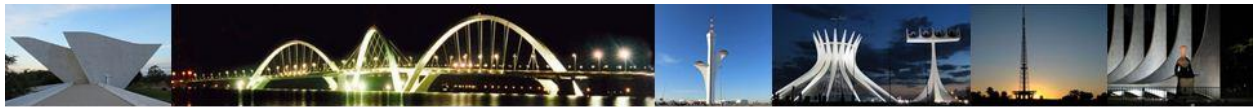
The Planetarium is located at *Eixo Monumental*, between the TV Tower and the Ulysses Guimarães Convention Center. Visiting hours from 9 a.m. to 9 p.m. on weekdays, and from 8 a.m. to 8 p.m. on weekends. There are two sessions scheduled in the morning, two in the afternoon, and one in the evening.

Admission is free.

Cathedral



Located on the South side of the *Eixo Monumental*, at the beginning of the Esplanade of the Ministries, Brasília's Cathedral was completed in 1967. It is dedicated to the patron saint of Brasília, Our Lady of Aparecida. The Cathedral is circular in shape and symbolizes two hands united in prayer. On the access way to the church are four bronze statues by Halinn Alfredo Ceschiatti,



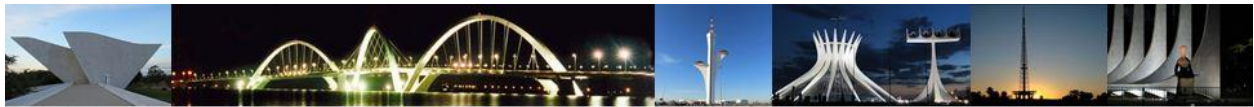
representing the four disciples of Christ. The entrance curves down and goes through a dark passage called the Meditation Area; the darkness symbolizes the time before creation. The nave itself is underground and is illuminated by the natural light which filters through the Cathedral's stained-glass walls. At the summit, where the sixteen curved columns converge, there is a metal cross blessed by Pope Paul VI. Inside the Cathedral there are paintings by the Brazilian artist Di Cavalcanti and three Ceschiatti angels hanging from the ceiling. The angels announce the arrival of Christ. The marble used in the Cathedral was especially imported from Italy, while the organ came from Germany and the bells in the tower next to the Cathedral were a gift from Spain.
<http://catedral.org.br/>

Palace of Dawn (*Palácio da Alvorada*)



The President's official residence, known as the Palace of the Dawn, was the first of Brasília's buildings to be erected (in June 1958). Designed by Oscar Niemeyer, its façade of tapered pillars became the symbol of the city and is depicted in the Federal District's coat of arms. Visitors often throw coins into the water mirror in the front of the Palace to make a wish. The presidential residence is open for visits only on Wednesdays from 3 p.m. to 5 p.m., with tickets being given from 2 p.m. It is located on the lakeside some 3 km from the Planalto Palace, where the President works.

www2.planalto.gov.br/presidencia/palacios-e-residencias-oficiais



Other Attractions in Brasília

Dom Bosco Church

Designed by Carlos Alberto Naves, this church is constructed entirely of concrete columns and blue stained-glass. The bronze doors depict the prophecies made by Dom Bosco, an Italian priest who allegedly predicted the construction of Brasília in 1883 by saying that *“a great civilization will be erected somewhere between the 15th and 20th parallels”*.



Above the altar hangs an 8-meter (26-feet) crucifix with the figure of Christ carved from a single block of wood, by Gotfredo Thaler. Location: SHIG 702 (Avenida W3 Sul), Lote B. <http://santuariodombosco.org.br/>

Dom Bosco Chapel / Ermida Dom Bosco



The Dom Bosco Chapel was built in 1957 as a tribute to St. John Bosco (see above) and was Brasília's first temple. It was built on the 15th parallel, where it is presumed that the saint stood in his dream foretelling Brasília's construction.

Oscar Niemeyer designed the temple as a small marble pyramid, with a cross at the top. Despite its dashing design, the chapel is a simple, unadorned monument, containing but a small statue of the saint. It commands a privileged view of the city across the lake. The temple is located at *Estrada Parque Dom Bosco* (Lago Sul's main road), near the Paranoá Dam. On weekends

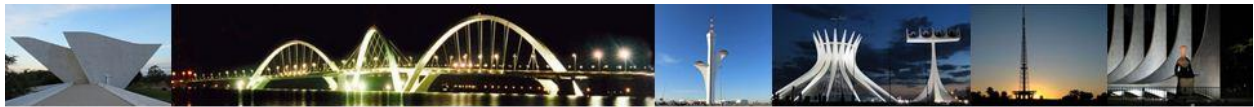


there are groups of people practicing skate board, and sometimes concerts and other activities take place.



Catetinho

Designed by Oscar Niemeyer, Catetinho is a simple wooden building built near the Brasília construction site. It is located at the BR-040 highway, *Saída Sul*, km 0. This is the place from which President Kubitschek oversaw the city's construction. The so-called "wooden board palace" was built in only 10 days, from October 22 to 31, 1956. The name "Catetinho," meaning small Catete, is a reference to the presidential residence in Rio. Catetinho is now a museum which holds part of the former President's library, as well as his furniture, personal objects and wardrobe. It is located outside the *Plano Piloto*, on the road to Belo Horizonte, BR 040. Phone number: +55 61 3338-8807/8694. Open from Tuesday through Sunday from 9:00 a.m. to 5:00 p.m. <http://www.cultura.df.gov.br/catetinho/>



Sarah Kubitschek City Park (*Parque da Cidade Sarah Kubitschek*)

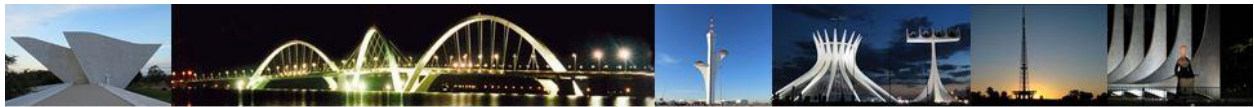


The [Sarah Kubitschek City Park](#) (named after President Kubitschek's wife), known as *Parque da Cidade*, is located between Asa Sul and the Sudoeste Sector, in Brasília. It was founded on October 11, 1978 and is the largest urban park in the world, with of 4,200,000 sq. meters (13,779,527.56 sq. feet), surpassing even Central Park in New York. The park was designed by urban planner Lúcio Costa, architect Oscar

Niemeyer and landscape artist Burle Marx. It has recreational infrastructure. There is an amusement park with a special site for putting up circuses, a bicycle track covering the whole park, eight playgrounds, a lake where children enjoy feeding ducks, several showers for sunbathers, wooded outdoor barbecue area, tables and benches, snack bars and a restaurant.



The park is also equipped for sports. There are soccer fields, multipurpose sports courts, jogging tracks, a go-cart racing track, areas set aside for competitions with model airplanes and model boats, a stadium for horse-riding shows and a special area for training dogs. The Fair and Exhibit



Pavilion offers infrastructure for big events in a 57,000-sq. meter (187,007.874 sq. feet) covered area, including an amphitheater which can seat 1,400 people.

The road which circles the park links it to the city traffic. There are five entrances: on the *Eixo Monumental*, near the Convention Center; at the end of the Graphic Industry Sector; between 910 and 911 Sul; At 906 Sul; and at 901 Sul, near the Radio and TV Sector. The city park is the largest urban park in Latin America.

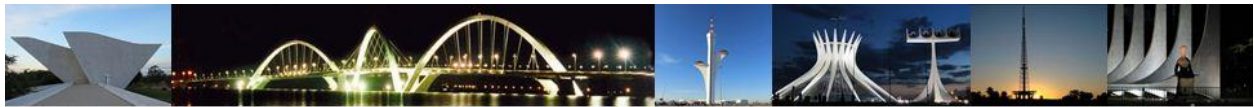
Digital Tower



The Brasília Digital TV Tower, also known as Cerrado Flower, is a broadcast tower, which made the digital television signal available for the whole Federal District and surroundings.

Projected by Brazilian architect Oscar Niemeyer, the Tower is 180 meters (590.551 feet) tall, from which 120 meters correspond to a concrete structure and the rest to the metallic structure of the television antenna. Moreover, two glass observatories will complete the structure. Access is free. Opened Saturdays, Sundays and holidays. From 9 a.m. to 5 p.m. on a first come, first served basis. It is

recommended to get there earlier than 4 p.m. if you are interested to go up to see the panoramic view. Directions: EPIA North to Sobradinho, turn right at Colorado. There are indications up to the site.



Botanical Garden (*Jardim Botânico*)



The Gardens cover 4,518 hectares, 526 of which are open to the public. A small entrance fee is charged per person and it is free for children under 10 years. It has an 800-meter (2624.67 feet) trail which takes visitors to several different plant species from the cerrado. The institution has a pioneer medicinal research garden with some 100 species of cultivated and classified herbs. There is also an Information Center, a plant genetic model with a collection of plants organized according to their evolution, and an Apiculture Technical Service which carries out research and disseminates technologies to help local honey producers. Visitors can

buy seeds of ornamental plants, medicinal plants, infusions, honey, herbal drinks and informative material. It is also a nice spot for jogging and walking especially. If you are a member of the garden, you have free admission to the grounds, and will also receive a newsletter.

The Botanical Garden is in the Dom Bosco Urban Mansion Sector – SMDB Conjunto 12, with an entrance near QI 23 in Lago Sul. It is open from Tuesday through Sunday from 8 a.m. to 5 p.m. Phone: + 55 61 3366-2141/3007.

www.jardimbotanico.df.gov.br



Água Mineral National Park

The story of the creation of the National Park of Brasília is directly related to the construction of Brasília, thus becoming an urban park with substantial visitation throughout the year, mostly because of the natural pools. For those who enjoy walking, the park has two trails. The Conservation Unit arose from the need to protect the rivers, drinking water providers to Capital Federal and maintain vegetation *in natura*. It helps the equilibrium of climate conditions in the Federal District.

In addition, the park protects ecosystems typical of the Cerrado of Central Plateau and is home to the basins of the streams forming the

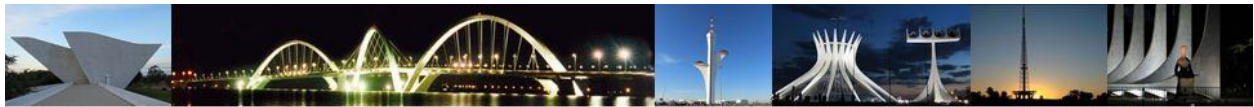
dam Santa Maria, which is responsible for supplying 25% of the drinking water that supplies the Federal Capital. Several vegetation types comprise the conservation area. The wildlife is abundant and diverse.

The park is also one of the main options in the area to know the values of the natural Cerrado and to perform recreational practices. It has two pools of running water and trails. Instituto Chico Mendes is now responsible for its administration.

www.icmbio.gov.br/portal

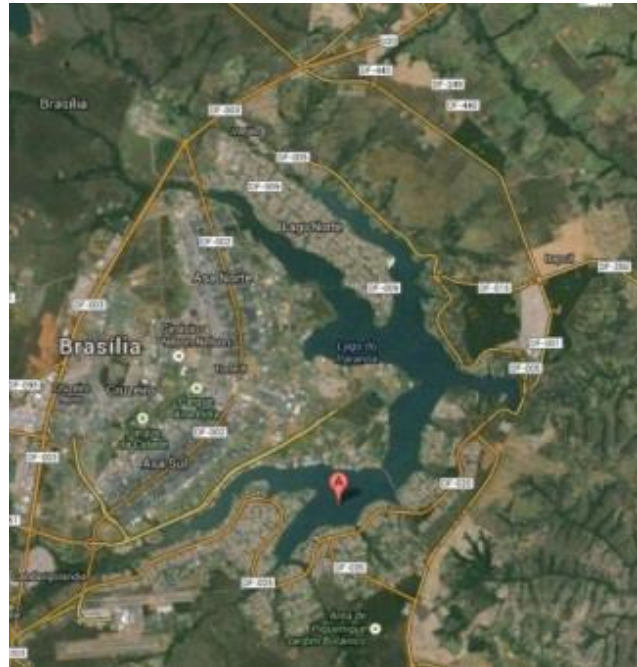
<http://www.icmbio.gov.br/portal/o-que-fazemos/visitacao/ucs-abertas-a-visitacao/213-parque-nacional-de-brasilia.html>





Paranoá Lake

Paranoá Lake was formed by damming the Paranoá River and the Gama, Torto, Bananal, Fundo and Vicente Pires Creeks. The objective was to increase the humidity and make Brasília's dry climate more tolerable. It has an area of 40 sq. km and a perimeter of 80 km. At the widest point it is 5 km across, and it is 45 meters deep at the deepest point. Except for some spots, the water is not polluted, and various water sports can be practiced. On the lake banks are several clubs, restaurants and recreational areas.



The Paranoá Dam is 33 km from the city, going down the Lago Sul Road, or 27 km from Lago Norte, going down the North Mansion Sector. Both roads offer a nice ride and a beautiful view of Brasília. The dam is 48 meters (157.48 feet) high, 630 (2066.93 feet) meters wide and can spill 150 cubic meters (5297.2 cubic feet) of water per second. It feeds a hydroelectric plant which can produce 25kw and helps supply the city.

Sail Boat on Paranoá Lake – Every weekend “Toa-toa” sails the waters of the Lake Paranoá. The trip takes 2 hours starting at the ASBAC Club and sailing past the Dom Bosco Chapel and the Paranoá dam. The boat has two decks and can take a maximum of 40 people. Phone: +55 61 99982 1161.

Paranoá Dam (*Barragem do Paranoá*)

The Paranoá Lake has a perimeter of about 50 miles and a maximum width of about 3 miles (maximum depth 45 meters). It was formed by the damming of the Paranoá River and Gama,



Torto, Bananal, Fundo and Vicente Pires Creeks. The objective was to increase the humidity and make the dry climate of the region more tolerable. The lake is also an excellent location for water sports and many of the clubs are located along the lake shores. The lake has been stocked with several varieties of fresh water fish. The Paranoá Dam was built to hold back the waters of the Paranoá River and lake and supplies electricity to part of the city.

JK Bridge (*Ponte JK*)

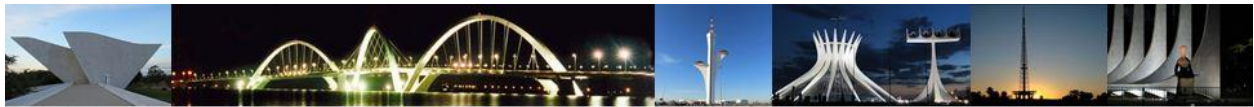


Inaugurated on December 15, 2002, the **Juscelino Kubitschek Bridge** crosses the Paranoá Lake and has become a tourist attraction. Elected the most beautiful bridge in the world by the Engineering Society of the State of Pennsylvania, USA, in 2003, it has the three asymmetric arches and the bridge connects the exits of the Monumental Axis to QL 26, Lago Sul.

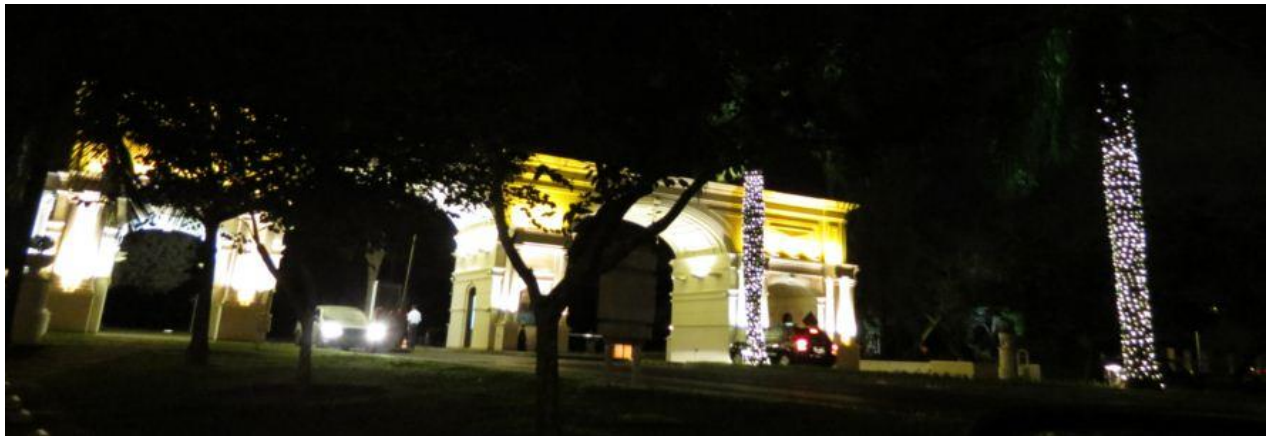
The JK Bridge is a steel and concrete bridge that crosses Lake Paranoá in Brasília. It links the neighborhoods of Lago Sul, São Sebastião and Paranoá to the Pilot Plan through the Monumental Axis. The structure of the bridge has a total length of 1,200 meters (3,900 feet), two carriageways with three lanes in each direction, walkways for cyclists and pedestrians.

Other bridges

There are other two bridges spanning the Paranoá Lake: Garças Bridge (*Ponte das Garças*) and Costa e Silva Bridge (*Ponte Costa e Silva*), which takes you to Pontão and to the residential and commercial areas of Lago Sul.

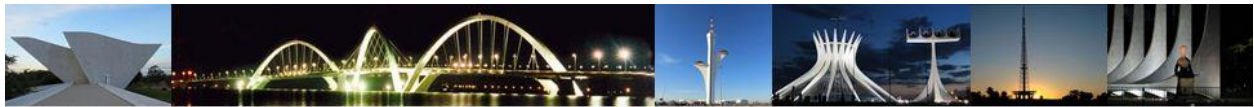


Pontão



Located on the south bank of Paranoá Lake, this area has several restaurants, playgrounds, multipurpose sports court and a skating rink. A craft market also takes place there on the last weekend of every month. It also houses concerts and there is a famous New Year's Eve party on the December 31st, with traditional fireworks. It also has two waterfront docks, one for fishing and the other for boats. At night, there is a beautiful view of the city and of the Costa e Silva Bridge. It is a nice place for people of all ages, family with children and couples. It is a good place to enjoy a beer with friends at the end of the afternoon watching at the sunset. This leisure area is located near that bridge, between QL 10 and QL 12 in Lago Sul. Access through L2 Sul.

Boats on the Paranoá Lake – “Toa-toa” sails the waters of the Lake Paranoá. The trip takes 2 hours starting at the ASBAC Club and sailing past the Dom Bosco Chapel and Paranoá Dam. The boat has two decks and can take a maximum of 40 people. Phone: +55 61 99982-1161.



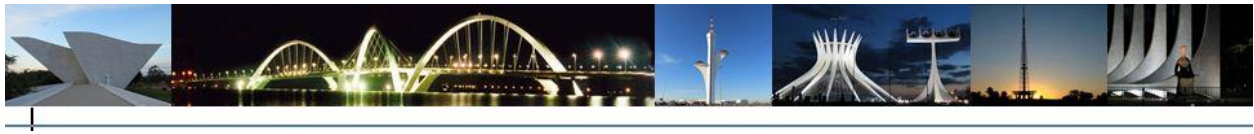
University of Brasília (Universidade de Brasília) Source: Website www.unb.br



The University of Brasília - UnB was inaugurated on April 21, 1962. UnB campus was designed by Lúcio Costa and repeats the same lines as the city. It has beautiful gardens and suspended stairways. It covers 3,952,000 sq. meters (12,965,879 sq. feet) and includes institutes, colleges, the library, the rector's office, the Olympic sports center and general service buildings. The most impressive buildings are the Central Sciences Institute, nicknamed the "Minhocão" (or "Big Worm"), which was designed by Oscar Niemeyer and João Filgueiras Lima. It is 720 meters long (2,362 feet) and forms a gentle curve like the Residential Axis of the city. Concrete and glass predominate in this building.

The University of Brasília currently has 2,445 teachers, 2,630 administrative technicians and 28,570 regular students and 6,304 graduates. It consists of 26 colleges and institutes and 21 specialized research centers. UnB offers 109 undergraduate majors, 31 courses at night and some courses are now ministered virtually, as distance education. There are still 147 postgraduate studies and 22 *lato sensu* specializations. The courses are divided into four *campi* around the Federal District: Darcy Ribeiro (Pilot Plan), Planaltina, Ceilândia and Gama.

The supporting institutions include the University Hospital, the [Central Library](#), which can hold over 150,000 volumes and has 2,000 users/daily, and a veterinary hospital. UnB is one of the top ten universities of the country.

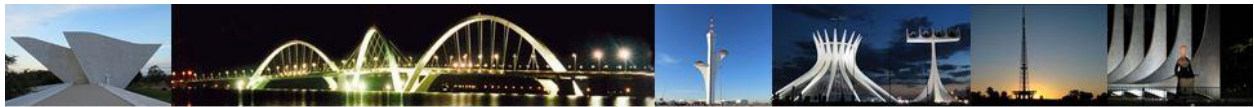


Zoo

Brasília Zoo has 600 hectares where more than 1,300 animals of 236 different species live, with special representation given to South American species, some of which are endangered. The zoo was the first environmental institution of the new capital, opened to the public in December 1957, even before Brasília's inauguration. Besides entertainment, the zoo also maintains important programs in environmental education, conservation and research.



It can be seen by car or on foot, by following the internal drives and walks that lead to the different enclosures and the lake where some of the animals are housed on islands. It has a snack bar, a restaurant, a wooded picnic area, an outdoor theater which seats 3,000 people, a playground and a little train for children. A small admission fee is charged. It is open from Tuesday to Sunday from 9:00 a.m. to 5:00 p.m. Location: Av. das Nações, s/n, Via L 4 Sul, Brasília. Phone: + 55 61 3445-7043. On holidays it opens at 2 p.m. www.zoo.df.gov.br



The Brazilian Way

Brazilian Manners

There are some differences in social behavior between North America and Brazil. We hope that the following topics will help you avoid some embarrassing situations and make your stay pleasant and rewarding.

Conversation

Most Brazilians are excellent conversationalists – sharp, quick and witty. Sometimes Brazilians are rather informal compared to other cultural standards. Many people, including taxi drivers and sales people, understand Spanish and some English. Even when Brazilians don't know English, they will try their best to understand you. It is risky to assume that all remarks made in a language other than Portuguese will pass unnoticed. This does not mean, however, that they are able to carry a conversation in these languages.

The common North American sign for "OK", using the thumb and index finger has a very vulgar connotation in Brazil and should be avoided. A "thumbs-up" expression is used to signify "OK" and sometimes can also be a very informal greeting (though this specific use has been dying out).

Greetings

It is a custom in Brazil to say "*Bom dia!*" (Good morning!), "*Boa tarde!*" (Good afternoon!) and "*Boa noite!*" ("Good evening/ good night!") to everyone, including salespeople, elevator operators, employees, etc. "*Boa tarde!*" is used from noon to 6 P.M., and "*Boa noite!*" is used after 6 P.M.

Both men and women shake hands when introduced, upon meeting and upon leaving, no matter how brief the encounter is. Brazilian children are taught to shake hands with adults and will want to greet you in this manner.



The “*abraço*” (hug), is the national form of greeting brought to the Iberian Peninsula by the Arabs and then to Brazil. Women give each other a kiss (*beijo*) on one or both cheeks. It is always safe to shake hands but not to offer a hug unless your Brazilian friend initiates it. Men and women may exchange kisses, as well as two women, but seldom two men, though it has become more common nowadays. It is neither mandatory, nor necessary to shake hands with everyone when presented to a group, though it is often done.

Time

Brazilians in general are not inclined to be strictly punctual when it comes to social events like parties and dinners. Also, it is not uncommon that your guests may not RSVP to an invitation or let you know only at the last minute that they cannot attend. For this reason, following up to invitations a few more times is advisable.

When dealing with more formal appointments and meetings, Brazilians do take punctuality more seriously, but delays happen with some frequency, with participants arriving 10 or 15 minutes later. It is best to plan to be on time while also having plan B to make better use of time.

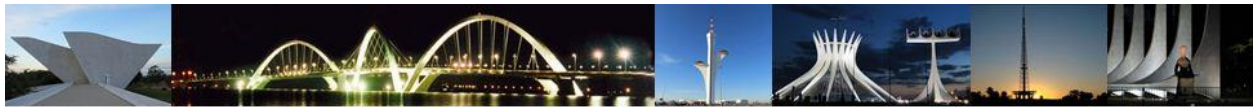
Food and Drink

Breakfast (*café da manhã*), normally consists of strong coffee and hot milk, bread with butter, jam, cheese or ham, cookies, fruits and fruit juice. This is generally included in the price of a hotel room.

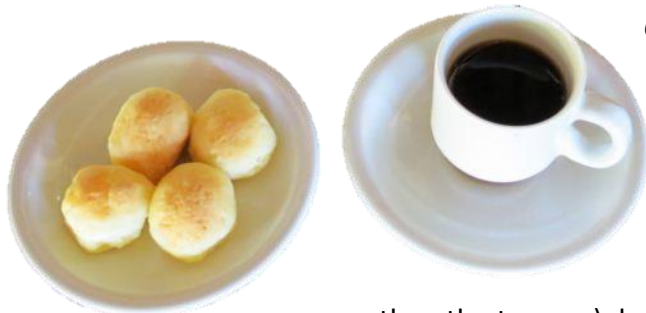
Lunch (*almoço*) is usually a full meal served around 1 p.m. It is the main meal of the day for Brazilians. Lunch break takes from one to two hours.

An optional snack (*lanche*) is eaten around 4 p.m. and sometimes includes a sandwich or the famous Brazilian cheese bread from Minas State (*pão de queijo*), a piece of cake with coffee, tea or chocolate.

Dinner (*jantar*) is usually served after 7 p.m.



Cafezinho



Cafezinho is half a demitasse cup, consisting of strong coffee with sugar. It may be taken after lunch and dinner and many times during the day. “*Cafezinho*” should be served in an appropriately sized cup (smaller than the tea cup); large cups of coffee are served only at breakfast.

It is considered polite to offer your guest “*um cafezinho*” if he/she is visiting your home any time before 6 P.M. After 6 P.M. you can offer juice or something alcoholic like beer or wine.

Eating out

When eating in hotels and restaurants, you may prefer to order bottled water. Some Brazilian beers and wines are good.

Brazilians do not dine out in the evenings until 8 p.m. or later. If you are accustomed to an earlier hour, you may be the only party in the restaurant upon your arrival.

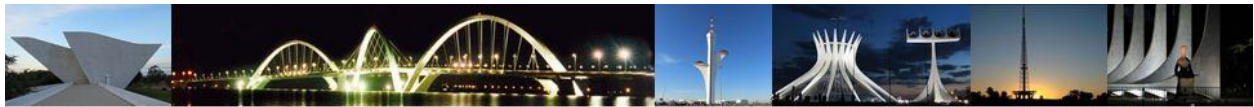
Try “*Guaraná*”, a very popular soft drink, made from an Amazonian fruit, tasting something like sweetened Gingerale.

A service charge of 10% is normally included on restaurant checks. If there is any doubt, ask.

When the tip has not been included, it is customary to leave 10%.

Separate bills for each person are not the case with all restaurants and bars. At most places, waiters will bring one bill referring to the whole table, then the bill is checked on by everyone paying it.

Brazilians generally drink moderately and prefer beer, whisky and wine. Before or after-dinner they drink wine, soft drinks or fruit juice. To ask for your check, when you catch the waiter/waitress eyes, just make a gesture in the air as if you were writing on your palm. This indicates that you are asking for your bill. You can also say: “*A conta, por favor*”.



Brazilian tea-parties begin very late, past 5 p.m., and often last until after 7 p.m.; and you are expected to stay the entire time. The food is generally elaborate and plentiful.

Brazilian happy hours begin around 6 p.m., and often last after 9 p.m. Bars and restaurants now have special offers for beers and special drinks for happy hours.

Curiosities of Brazilian Culture

24 Traditional Brazilian Foods You Need To Eat Right Now:

www.buzzfeed.com/gabrielakruschewsky/traditional-brazilian-foods-you-need-to-eat-right-now

www.brazzil.com

Cultural Brasília

Brasília offers some cultural centers, art galleries and museums. New exhibits are frequent. Openings at exhibitions in the major art galleries are widely publicized in the press. Anyone can attend, although invitations are usually distributed. Cocktails or refreshments are usually served at gallery openings. There are more commercial art galleries too and even itinerary exhibitions. Always check internet links.

Art Galleries, Cultural Centers

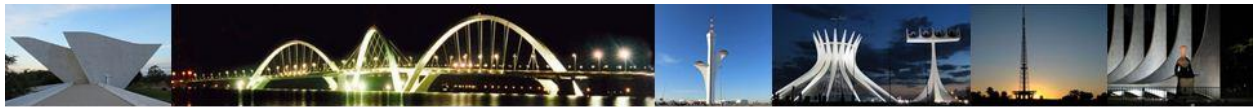
Alliance Française Gallery (*Galeria da Aliança Francesa*) – SHIS, QI 21. Phone: +55 61 3242-7500.

www.afbrasil.org.br

Casa da Cultura da América Latina – CAL – SCS, Bloco A (Ed. Anápolis), 170, 5º andar. Phone: +55

61 3321-5811. www.casadacultura.unb.br

Bank of Brazil Cultural Center (*Centro Cultural Banco do Brasil – CCBB*)



It is a very nice place with art galleries, a theater, a small movie theater, two coffee shops and a book store with many art books. CCBB has several high-end exhibitions and plays throughout the year.

The entrance is in front of the Golf Club, and it is open every day except on Mondays, from 10 a.m. to 9 p.m.

CCBB is located near the JK Bridge – SCES Tr. 2, Lote 22.

<http://culturabancodobrasil.com.br/portal/distrito-federal>

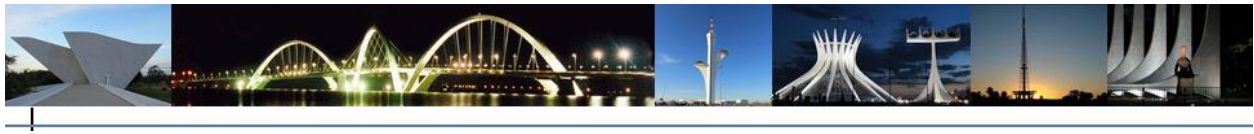
Cultural Center of Caixa – SBS, Quadra 4, Edifício Sede. Place with art galleries, theater/movie theater/auditorium. Several exhibitions and plays, concerts throughout the year. Phone: + 55 61 3414-9452. www.caixacultural.com.br/html/main.html

Casa Thomas Jefferson – SEPS 706/906, Conjunto B. Phone: +55 61 32443-6588. www.thomas.com.br

Espaço Cultural Contemporâneo – Iguatemi Shopping Mall - <http://eccobrasilia.com.br>

Le Corbusier Gallery – French Embassy - SES 801, Av. das Nações, Lote 4. Phone: +55 61 3312-9100

JK Memorial Gallery (*Memorial JK*) – Eixo Monumental, Praça do Cruzeiro. Phone: +55 61 3225-9451. www.memorialjk.com.br



Gallery of the Federal Senate (*Galeria do Senado Federal*) – Praça dos Três Poderes – Galeria do Anexo I. Phone: +55 61 3311-3018/3343

Good Will Temple Gallery (*Galeria do Templo da Boa Vontade*) – SGAS 915, Lote 75/76. Phone: +55 61 3245-1070. <https://www.tbv.com.br/>

Zumbi dos Palmares Cultural Space (*Espaço Cultural Zumbi dos Palmares*) – House of Representatives / Câmara dos Deputados, Praça dos Três Poderes, Térreo. Phone: +55 61 3215-8080. www2.camara.leg.br

Libraries

Brasília National Library (*Biblioteca Nacional de Brasília*)

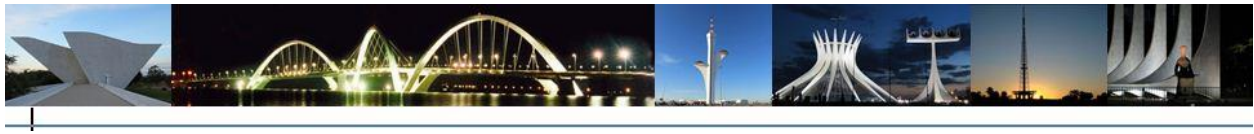


The National Library is a project of the architect Oscar Niemeyer and is already part of the cultural life of Brasília. The bold and modern frameworks give internal and external space area for the presentation of cultural and corporate events produced by society. It offers study rooms, wireless internet, computers, journals and national

and international newspapers, books and courses.

Email: bnb@bnb.df.gov.br

UnB Central Library (*Biblioteca Central da Universidade de Brasília*) – UnB – Campus Universitário – Asa Norte. Monday through Friday, 7 a.m. to 11:45 p.m./ Saturday and Sunday, 8 a.m. to 5:45 p.m. Phone: +55 61 3307-2417. www.bce.unb.br



Demonstrative Library – National Institute of the Book (*Biblioteca Demonstrativa de Brasília*) –

Currently closed for renovation, expected to be reopened towards the end of 2017.

www.bdb.org.br

Justice Ministry Library (*Biblioteca do Ministério da Justiça*) – Monday through Friday, 7:30 a.m.

to 7:30 p.m. Palácio da Justiça, Edifício Sede, Esplanada dos Ministérios. Phone: +55 61 3429-

3275. <http://portal.mj.gov.br>

House of Representatives Library (*Biblioteca da Câmara Federal*) – Câmara dos Deputados do

Brasil, Anexo II, Praça dos Três Poderes. Phone: + 55 61 3216-0120.

www2.camara.leg.br/documentos-e-pesquisa/biblarg/apresentacao/conheca

House of Representatives Virtual Library (*Biblioteca Virtual da Câmara Federal*) –

<http://bd.camara.leg.br/bd>

Federal Senate Library (*Biblioteca do Senado Federal*) – Senado Federal, Anexo II, Praça dos Três

Poderes. Phone: +55 61 3311-3943/3944. www.senado.gov.br/senado/biblioteca/

Federal Senate Virtual Library (*Biblioteca Virtual do Senado Federal*) –

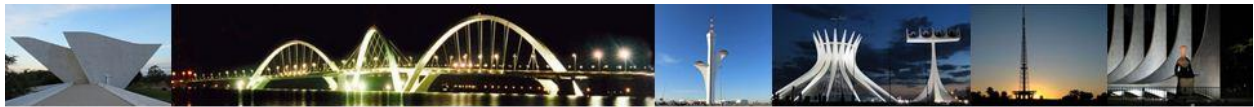
www.senado.gov.br/senado/biblioteca/colecoes/bib_digital.asp

Library of the Superior Labor Court (*Biblioteca do Superior Tribunal do Trabalho*) – AFS Quadra

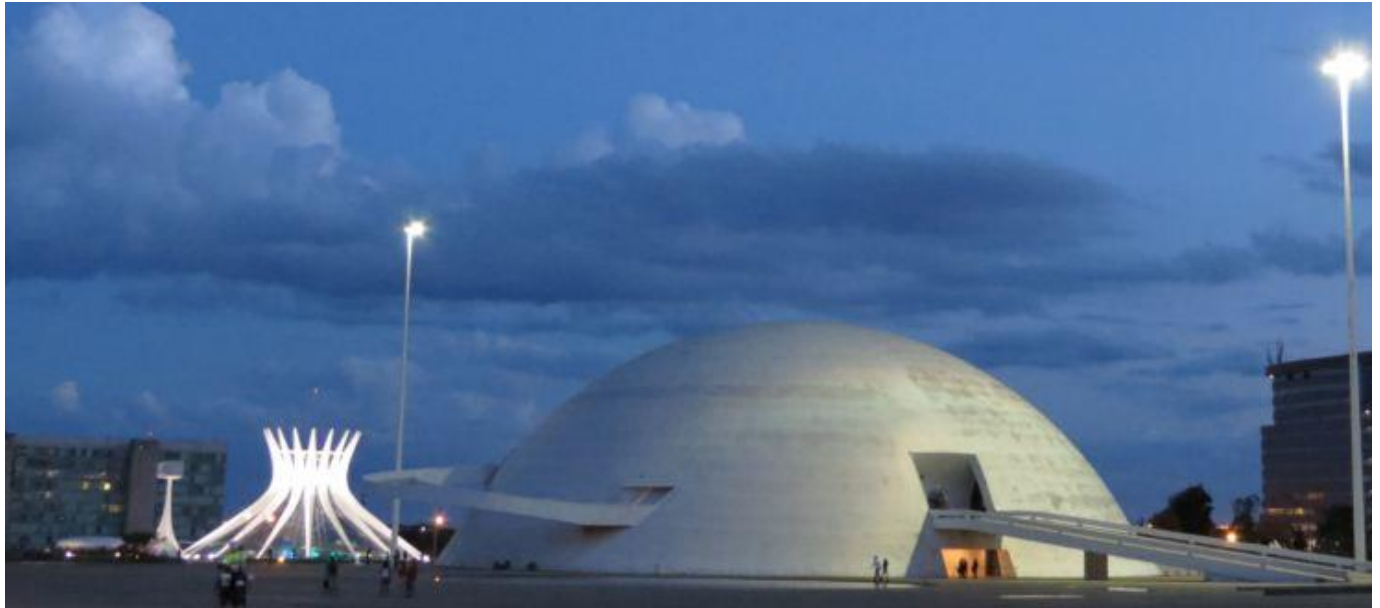
8, Lote 1, Bloco B, mezanino. Phone: +55 61 3043-4236. www.tst.jus.br/web/biblioteca

Library of the Supreme Court (*Biblioteca do Supremo Tribunal de Justiça*) – SAFS, Quadra 06,

Lote 01, Trecho III. Phone: +55 61 3319-8000. <http://www.stj.jus.br/portal/site/STJ>



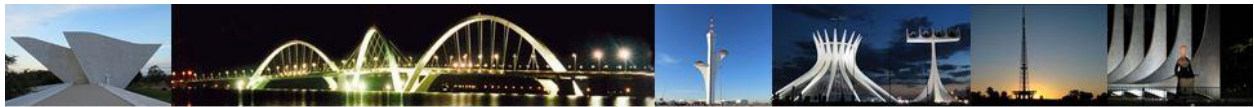
Museums



The National Republic Museum Honestino Guimarães

The National Republic Museum Honestino Guimarães with its eye-catching architecture and various exhibits of national and international arts, provides an outmost high-tech lighting that gives a genuine view of the arts exposed. The design of the museum is like that of a spacecraft. The museum has two auditoriums: One with 700 seats and another one with 80 seats. Visiting the National Museum is a great activity for the whole family. Opens: Tuesday/Sunday, 9 a.m. to 6 p.m. Phone: +55 61 3325-5220. Email: museunacional@gmail.com

Lúcio Costa Space (*Espaço Lúcio Costa*) – Lúcio Costa space is a small underground museum designed by Oscar Niemeyer to honor Architect Lúcio Costa. It is located at the Plaza of the Three Powers and houses the template of Brasília: A Mock Tactile Pilot Plan and historic photos from the time of construction and inauguration city. Open for visits Tuesday through Sunday from 9 a.m. to 6 p.m. Phone: +55 61 3225-7660



Federal District Historic and Geographic Institute (*Instituto Histórico e Geográfico do DF*) – SEPS 703/903. Monday through Friday, 8 a.m. to 12 p.m. and 2 p.m. to 5 p.m. Phone: + 55 61 3224-6544/ 3224 - 8467.

Memorial of Indigenous Peoples (*Memorial dos Povos Indígenas*) – Built in 1987, the Memorial of Indigenous Peoples was designed by Oscar Niemeyer, refers to a longhouse of the Yanomami Indians. The space aims to show the diversity and richness of indigenous culture in a dynamic and alive way. In the collection, there are pieces representing various tribes. Phone: +55 61 3344-1155/ 3306-2874.

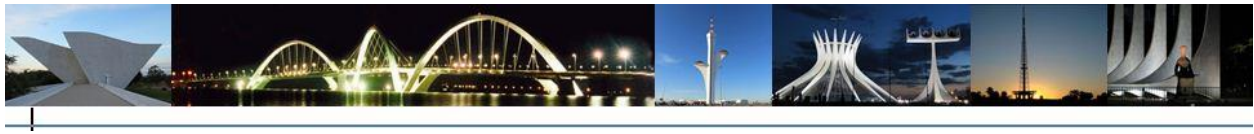
Art and Tradition of Northeast Museum (*Museu Arte e Tradição do Nordeste*) – Ceará House (Casa do Ceará) Phone number: +55 61 3533-3800.

House of Representatives Museum (*Museu da Câmara dos Deputados*) – Phone: +55 61 3318-6801. <https://www2.congressonacional.leg.br/visite/agendamento-pt>

Geosciences Museum (*Museu de Geociências*) – UnB, Campus Universitário Darcy Ribeiro, ICC, Ala Norte. Phone: +55 61 3107- 7001/ 3107-7004.

Live Museum of the Candango Memory (*Museu Vivo da Memória Candanga*) – The museum is located in the wooden building that housed Brasília's first hospital, now named after President Juscelino Kubitschek. It houses items from the hospital itself, Brasília's first hotel, and many historical photos. It has 750 period newspapers and magazines available with articles on the city. From Monday to Saturday, 9 a.m. to 5 p.m. Address: Via EPIA Sul, Setor JK, Conjunto HJKO, Lote D, Núcleo Bandeirante. Phone: +55 61 3301-3590.

Central Bank Museum (*Museu do Banco Central*) – This is one of the most popular museums in Brasília. With over 100,000 items, it explains the origins and evolution of money in the world. On



display are pieces such as extravagantly sized coins and giant gold nuggets. The museum is in the Central Bank's main building, first underground level. Phone: +55 61 3414-2097 / 3311-3543.

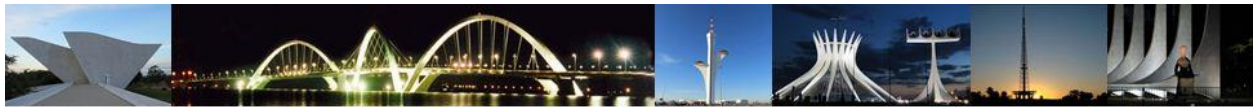
Free admission, Tuesday through Friday, 10 a.m. to 5 p.m. and Saturday, 2 – 6 p.m. Currently closed for visitations in person but has a virtual tour. www.bcb.gov.br/?MUSEU

Museum of the National Savings Bank (*Museu da Caixa Econômica Federal*) seeks to preserve the institution's history. It holds more than 5,000 historic documents and items, from period banking paraphernalia to paintings by Djanira and Di Cavalcanti. Also, on display are a reconstruction of a 1930's bank branch office and old lottery draw equipment. The museum is located in the Conjunto Cultural da Caixa Econômica Federal, SBS, Quadra. 4, Lotes 3/4. Phone: +55 61 3414-9452/6456. Caixa Cultural

Postal Museum (*Museu Telegráfico Postal*) – The Museum of the Brazilian Postal Service holds more than one million postage-stamps, including the blanking dies for the first Brazilian stamp: *Olho de Boi* – one of the most valuable collector stamps in the world. The most important holding, however, is the original famous letter by Pero Vaz de Caminha, the first ever to be sent from the country.

The museum has equipment used in postal, telegraph and telephone operations in Brazil. The evolution is traced up to our days. It is located in the Setor Comercial Sul - Edifício Apolo: SCS, Bloco A, 230. Phone: +55 61 3307-3464. Museu dos Correios

National Press Museum (*Museu da Imprensa Nacional*) – Founded in 1982 to make the history of the Brazilian National Press better known, the museum has audiovisual facilities which tell the story of the press since colonial times. Its documents are available for browsing and research. It is in the Setor de Indústrias Gráficas: SIG, Quadra 6, Lote 800. Open to visitors from Tuesday through Friday, 9 a.m. to noon; 2 p.m. to 5 p.m. Phone: +55 61 3441-9618. <https://www.gov.br/pt-br/servicos/visitar-o-museu-da-imprensa-nacional>



Music in Brasília

Some of the events are informed by websites and newspapers with extremely short notice, so it is wise to check the local newspaper “Correio Braziliense” on Friday and Sunday. There you can find information on shows, music, opera, theater, festivals, dance, fairs and exhibitions. Concerts and recitals are sometimes sponsored by various embassies, featuring visiting musicians from their countries. Lately, more international artists have been including Brasília in their tours. There is also a local community newspaper called *Jornal da Comunidade* delivered free on Saturday throughout Brasília.

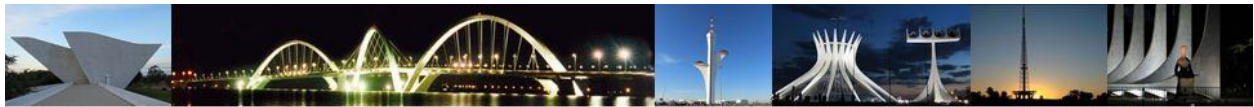
Cláudio Santoro National Theater (*Teatro Nacional Cláudio Santoro*)



This theater has two major halls – **Sala Villa Lobos**, with 1,300 seats, and **Sala Martins Pena**, with 450 seats – and an auditorium, **Sala Alberto Nepomuceno**, with

100 seats for conferences and recitals. There are also three halls for rehearsals: one for choruses, one for dance and one for orchestras, besides spaces for art exhibitions and a coffee shop. However, the National Theater was closed for renovation in 2014 and so far, the foyer has been reopened, with other rooms yet to be reopened in the coming months. The National Theater Orchestra is currently playing the weekly concert at Cine Brasília, every Tuesday at 8 p.m., with free admission. Other concerts may take place at the [Ulysses Guimarães Convention Center](#).

Phone: +55 61 3325-6239 and 3325-6256. <http://www.cultura.df.gov.br/teatro-nacional-claudio-santoro/>



Clube do Choro de Brasília



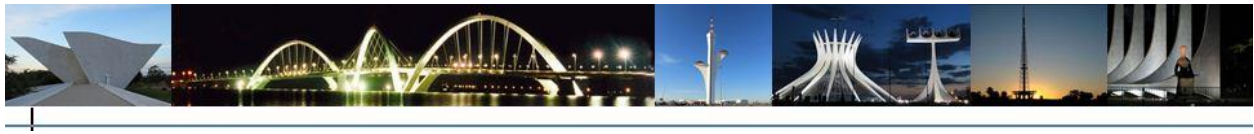
This venue hosts concerts of *choro*, a Brazilian Popular Music gender *Clube do Choro* is located at Eixo Monumental, between the TV Tower and the Convention Center. Concerts take place from Wednesdays through Fridays, starting at 9:30 P.M. It is advisable to buy your tickets in advance. Buy tickets from 10 a.m. to 9 p.m. Monday through Fridays, and 7 p.m. to 9:30 p.m. on Saturdays. Address: SDC, Eixo Monumental – Brasília. Phone: +55 61 3327-0494. www.clubedochoro.com.br

Thomas Jefferson House (Casa Thomas Jefferson)

This organization has a musical program every Friday evening at 9 p.m. They are usually free. By putting your name on their mailing list, you can receive regular information of their recitals. Most of the programs are held at SEPS 706/906, Asa Sul, since Lago Sul branch is more focused on English classes. Locations: SEPS 706/906. Phone: +55 61 3442-5500. There are also other branches in Asa Norte, Lago Sul, Sudoeste and Taguatinga. www.thomas.org.br

The Brasília School of Music (Escola de Música de Brasília)

This school is a secondary level, vocational type of institution which has approximately 2,000 students. During the year there is an active concert program at the school's auditoriums by Brazilian and foreign professionals programmed by the Cultural Foundation of the Federal District. – SGAS 602, Módulo D. Phone: + 55 61 3901-6760. www.ebc.com.br/tags/escola-de-musica-de-brasilia



List of Services

ATM Machines

Besides all the bank branches, most supermarkets, shopping malls and convenience stores have ATM machines. Some of them can be found at:

Asa Sul

- SHCS 502, Bloco A, Loja 13;
- Posto Igrejinha - SQS 307, Lote PII;
- Banco do Brasil – SBS Quadra. 2, Bloco E, Térreo, Loja 180/183;
- Pátio Brasil– SCS Quadra. 7, – TECBAN (at the food court).

Asa Norte

- Shopping Liberty Mall– SCN Qd. 02, Bloco D, Térreo (close to the escalators) Brasília Shopping (ATM's next to Livraria Eldorado and Joalheria Alpha Design) – SCN Qd. 5, Lote A
- Conjunto Nacional – SDN

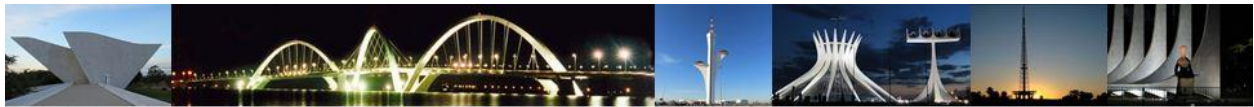
Lago Sul

Banks

- Banco do Brasil – Phone: +55 61 3365-1183. www.bb.com.br
- Caixa Econômica Federal – Phone: +55 61 3327-1264. www.caixa.gov.br
- Citibank – Phone: +55 61 3218-8000/ 3364-3611. www.citibank.com.br
 - Itaú Personalité – Phone: +55 61 3004-7011. www.itaupersonnalite.com.br

Book Stores

- Livraria Cultura. <http://www.livrariacultura.com.br/> www.livrariacultura.com.br
- Livraria Saraiva. Find a store: www.livrariasaraiva.com.br
- Livraria SBS – (Special Book Services) – SEPS 705/905, Loja T31, Conjunto B. Phone: +55 61 3242-9331/ 3244-3749 www.sbs.com.br



- Livraria Sebinho - Second hand bookshop – CLN 406, Bloco c, Loja 72, Asa Norte. Phone: + 55 61 3272-309. www.sebinho.com.br

US Newspapers such as The New York Times and the Washington Post can be bought at the airport.

Movie Theaters

- Alameda Shopping Theaters – Taguatinga. Phone: +55 61 3351-4761
- Cine Brasília – EQS 106/107. Phone: + 55 61 3244-1660
- Cinemark – Shopping Pier 21, SCES Tr.2, Conjunto 32/33. Phone: +55 61 3223-0234
- Cinema Shopping Casa Park. Phone: +55 613345.8669
- Cine Cultura Liberty Mall – Phones: +55 61 3327.1588 / 3326.1399
- Boulevard Shopping. Phone: +55 61 3223-1617
- Park Shopping Theaters. Phone: +55 61 3223-1617
- Pátio Brasil Theaters – SCS. Phone: +55 61 3223-1617

Embassies in Brasília



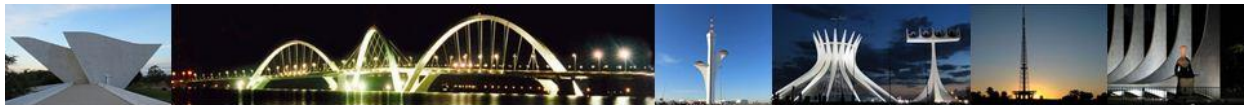
ÁFRICA DO SUL

SES, Av. das Nações, Qd. 801 – Lote 6

70406-900 – Brasília/DF

Phone: +55 61 3312-9500

www.africadosul.org.br



ALEMANHA

SES, Av. das Nações, Qd. 807 – Lote 25
70415-900 – Brasília/DF
Phone: +55 61 3442-7000
<https://brasil.diplo.de/br-pt/representacoes/botschaft>

ANGOLA

SHIS, QI 6, Conjunto. 5, Casa 1
71620-055 – Brasília/DF
Phone: +55 61 3248-4489 Fax: + 55 61 3248-1567

ARÁBIA SAUDITA

SHIS QL 10 – Conjunto 9 – casa 20
70471-900 – Brasília/DF
Phone: +55 61 3248-3523/3525
<https://www.embaixadas.net/1/11923/Arabia-Saudita-em-Brasilia>

ARGÉLIA

SHIS QI 9 – conj. 13 – casa 1
70472-900 – Brasília/DF
Phone: +55 61 3248-4039/1949
www.embaixadadaargelia.com.br

ARGENTINA

SES Quadra 803, Lote 12
70442-905 – Brasília/DF
Phone: +55 61 3212-7600
embajada-argentina.gov.ar

AUSTRÁLIA

SES, Av. das Nações, Qd. 801 – Conj. K – Lote 07
70200-010 – Brasília/DF
Phone: +55 61 3226-3111
<https://brazil.embassy.gov.au/brasportuguese/home.html>

ÁUSTRIA

SES, Av. das Nações, Qd. 811 – Lote 40
70200-110 – Brasília/DF
Phone: +55 61 3443-3111/ 3443-3231
www.bmeia.gv.at/pt/embaixada/brasilia.html

BANGLADESH

SHIS, QL 12, Conjunto 1 casa 3 – Lago Sul
71630-215 – Brasília/DF
Phone: +55 61 3522-8634
mofa.portal.gov.bd/site/page/7b40ea3c-6fe8-4c4b-8cac-2805c8193c88

BÉLGICA

SES, Av. das Nações, Qd. 809 – Lote 32
70422-900 – Brasília/DF
Phone: +55 61 3443-1056/1133/1436
www.belgica.org.br

BOLÍVIA

SHIS, QI 19, Conjunto 13, casa 19
71655-130 – Brasília/DF
Phone: +55 61 3366-3432
<http://www.embolivia.org.br/>

BULGÁRIA

SEN, Av. das Nações, , Av. das Nações, Qd. 801 – Lote 8
70432-900 – Brasília/DF
Phone: +55 61 3223-6193/5193
<https://www.embaixadas.net/1/3256/Bulgaria-em-Brasilia>

CABO VERDE

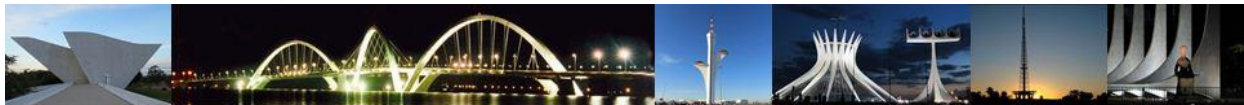
SHIS QL 14 Conjunto 3 casa 8 – Lago Sul
CEP: 71.640-035- Brasília/DF
Phone: +55 61 3248-0543/ 3364-3472
www.embcv.org.br

CAMARÕES

SHIS QI 15 Conjunto 14 casa 17 – Lago Sul
CEP: 71.635-340- Brasília/DF
Phone: +55 61 3248-2400
<http://www.embcameroun.org.br/>

CANADÁ

SES, Av. das Nações, Qd. 803 – Lote 16
70410-900 – Brasília/DF
Phone: +55 61 3424-5400



<http://international.gc.ca/world-monde/country-pays/brazil-bresil/index.aspx?lang=eng>

CHILE

SES, Av. das Nações, Qd. 803 – Lote 11
70407-900 – Brasília/DF
Phone: +55 61 2103-5151 / +5 61 2103-6100
<https://chile.gob.cl/brasil/>
E-mail: echile.brasil@minrel.gov.cl

CHINA

SES, Av. das Nações, Qd. 813 – Lote 51
70443-900 – Brasília/DF
Phone: +55 61 2195-8200
<http://br.china-embassy.org/por/>

COLÔMBIA

SES, Av. das Nações, Qd. 803 – Lote 10
70444-900 – Brasília/DF
Phone: +55 61 3226-8997/8902
<http://br.china-embassy.org/por/>

CONGO

SHIS QI 9 Conjunto 8 casa 20 – Lago Sul
Phone: +55 61 3536-5379
<https://ambardcbrasil.com.br/>

CORÉIA DO SUL

SEN, Av. das Nações, Lote 14
70436-900 – Brasília/DF
Phone: +55 61 3321-2500/2503
<http://overseas.mofa.go.kr/br-pt/index.do>

COSTA DO MARFIM

SEN, Av. das Nações, Qd. 601 – Lote 9
70473-900 – Brasília/DF
Phone: +55 61 3321-4656
www.cotedivoire.org.br

COSTA RICA

SRTVN Qd. 701 – Edifício Centro Empresarial
Norte
Conj. C – Ala A – salas. 308 / 310
70.719-903 – Brasília/DF
Phone: +55 61 3326-2186 / 2287

<https://www.embaixadas.net/1/1968/Costa-Rica-em-Brasilia>

CROÁCIA

SHIS QI 09 – Conjunto 11 – casa 03
71625-110 – Brasília/DF
Phone: +55 61 3248-0610 / 7855 / 0215
Fax: +55 61 3248- 1708

CUBA

SHIS QI 5 – conj. 18 – casa 1
71615-180 – Brasília/DF
Phone: +55 61 3248-4710/4517
<https://www.embaixadas.net/1/2101/Cuba-em-Brasilia>

DINAMARCA

SES, Av. das Nações, Qd. 807 – Lote 26
70.200-900 – Brasília/DF
Phone: +55 61 3878-4500
www.ambbrasil.com.dk

EGITO

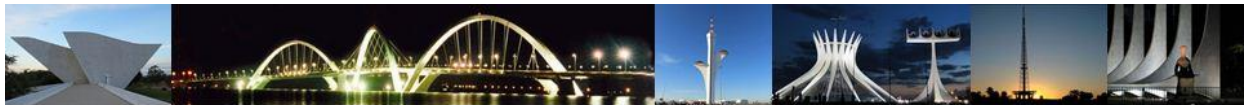
SEN , Av. das Nações, Lote 12
70435-900 – Brasília/DF
Phone: +55 61 3323-8800/ 4749
<https://www.embaixadas.net/1/8669/Egito-em-Brasilia>

EL SALVADOR

SHIS QL 22 Conjunto 7 casas 8 – Lago Sul
Phone: +55 61 3364-4141/3364-3044
<https://www.embaixadas.net/1/20760/El-Salvador-em-Brasilia>

EMIRADOS ÁRABES UNIDOS

SHIS QI 05 – Chácara 54- Lago Sul
71600-580 – Brasília/DF
Phone: +55 61 3248-0717/ 0591/ 0868
E-mail: uae@uae.org.br
<https://www.embaixadas.net/1/21616/Emirados-Arabes-Unidos-em-Brasilia>

**EQUADOR**

SHIS QL 10 – Conjunto 08 – Casa 01
Lago Sul – Brasília – DF – CEP: 71630-085
Phone: +55 61 3248-5560/5660
<http://brasil.embajada.gob.ec/>

ESLOVÁQUIA

SES , Av. das Nações, Qd. 805 – Lote 21B
70.200-902- Brasília/DF
Phone: +55 61 3443-1263/1265
<https://www.embaixas.net/1/8026/Eslovaquia-em-Brasilia>

ESPAÑA

SES , Av. das Nações, Qd. 811 – Lote 44
70.429-900 – Brasília/DF
Phone: +55 61 301-1600
www.exteriores.gob.es/embajadas/brasilia/es/Paginas/inicio.aspx

ESTADOS UNIDOS

SES, Av. das Nações, Qd. 801 – Lote 3
70403-900 – Brasília/DF
Phone: +55 61 3312-7000
www.embaxadaamericana.org.br

FILIPINAS

SEN , Av. das Nações, Lote 1
70431-900 – Brasília/DF
Phone: +55 61 3224-8694/ 3223-5143
<http://www.philembassybrasilia.org/>

FINLÂNDIA

SES , Av. das Nações, Qd. 807 – Lote 27
70417-900 – Brasília/DF
Phone: +55 61 3443-7151
Fax: +55 61 3443-3315
www.finlandia.org.br

FRANÇA

SES , Av. das Nações, Qd. 801 – Lote 4
70404-900 – Brasília/DF
Phone: +55 61 3222-3999 / 3920
<https://br.ambafrance.org/>

GABÃO

SHIS QI 9 – 9 casas 19 – Lago Sul
71625-160 – Brasília/DF
Phone: +55 61 3248-3536/ 3533
E-mails: embgabao@yahoo.com.br

GANÁ

SHIS QL 10 – conj. 8 – casa 2
CEP: 71.630-085- Brasília/DF
Phone: +55 61 3248-6049/ 6047
E-mail: ghaembra@zaz.com.br

GRÉCIA

SES , Av. das Nações, Qd. 805 – Lote 22
70480-900 – Brasília/DF
Phone: +55 61 3443-6573 / 6421 / 7263
www.mfa.gr/missionsabroad/br/brazil

GUATEMALA

SHIS QI 03 – Conjunto 9 – casa 7 Lago Sul
71605-290 – Brasília/DF
Phone: +55 61 3248-4175 / 0573
E-mails: embaguater-brasil@minex.gob.gt

GUIANA

SHIS QI 05 – Conjunto 19 – casa 24 Lago Sul
71615-190 – Brasília/DF
Phone: +55 61 3248-0874/0875
<http://www.embguyana.org.br/>

HAITI

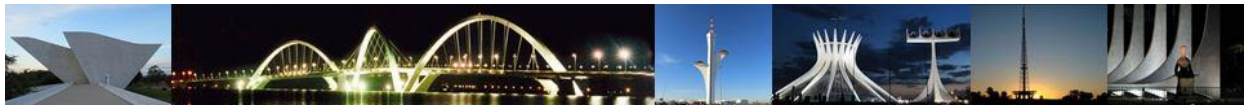
SHIS QI 13 Conjunto 8 casa 13 – Lago Sul
71 635-080- Brasília/DF
Phone: +55 61 3248-6860/ 1337
E-mail: embhaiti@terra.com.br

HOLANDA

SES, Av. das Nações, Qd. 801 – Lote 5
70405-900 – Brasília/DF
Caixa Postal 07/0098 CEP: 70.359-970
Phone: +55 61 3961-3200
<https://www.holandaevoce.nl>

HONDURAS

SHIS QI 19 – Conjunto 7 – casa 34



71655-070 –Brasília/DF
Phone: +55 61 3366-4082
www.embhonduras@ig.com.br

HUNGRIA

SES, Av. das Nações, Qd. 805 – Lote 19
70413-900 – Brasília/DF
Phone: +55 61 3443-0836/0822
<https://braziliaveros.mfa.gov.hu/bra>

ÍNDIA

SHIS QL 8 – conj. 8 – casa 1
71.620-285 – Brasília/DF
Phone: +55 61 3248-4006
www.indianembassy.org.br

INDONÉSIA

SES, Av. das Nações, Qd. 805 – Lote 20
70479-900 – Brasília/DF
Phone: +55 61 3443-1788/8800
<http://www.embaixadaindonesia.org/>

IRÃ

SES, Av. das Nações, Qd. 809 – Lote 31
70421-900 – Brasília/DF
Phone: +55 61 3242-533/ 5915/ 5124/ 5874
<https://www.embaixadas.net/1/21622/Ira-em-Brasilia>

IRAQUE

SES, Av. das Nações, Qd. 815 – Lote 64
70430-900 – Brasília/DF
Phone: +55 61 3346-2822/ 6612
E-mails: brzemb@mofaml.gov.iq

ISRAEL

SES, Av. das Nações, Qd. 809 – Lote 38
70424-900 – Brasília/DF
Phone: +55 61 2105-0500
<http://brasilia.mfa.gov.il>

ITÁLIA

SES, Av. das Nações, Qd. 807 – Lote 30
70420-900 – Brasília/DF

Phone: +55 61 3442-9900
www.ambbrasil.esteri.it/Ambasciata_Brasilia

JAPÃO

SES, Av. das Nações, Qd. 811 – Lote 39
70425-900 – Brasília/DF
Phone: +55 61 3442-4200
www.br.emb-japan.go.jp

JORDÂNIA

SHIS QI 9 – Conjunto 18 – casa 14 Lago Sul
71.625-180 – Brasília/DF
Phone: +55 61 3248-5407/5414
www.visitjordan.com

KUWAIT

SHIS QI 5 – chácara 30
71600-550 – Brasília/DF
Phone: +55 61 3248-2323 / +55 61 3213-2333
<https://www.embaixadas.net/1/21623/Kuwait-em-Brasilia>

LÍBANO

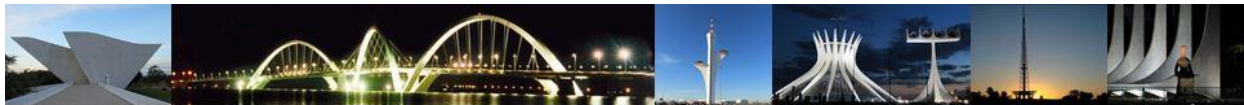
SES Av. das Nações – Qd. 805 – Lote 17
70411-900 – Brasília/DF
Phone: +55 61 3443-5552/3808 / 8570
<HTTP://WWW.BRASILIA.MFA.GOV.LB/BRASILIA/PORTUGUESE/HOME>

LÍBIA

SHIS QI 15 – chácara 26 Lago Sul
71.600-750 – Brasília/DF
Phone: +55 61 3248-6710/6716
E-mail: emlibia@terra.com.br
<https://www.embaixadas.net/1/21625/Libia-em-Brasilia>

MALÁSIA

SHIS QI 5 – chácara 62 Lago Sul
70477-900 – Brasília/DF
Phone: +55 61 3248-5008/6215
<https://www.embaixadas.net/1/14185/Malasia-em-Brasilia>
E-mail: mwbrasil@terra.com.br



MARROCOS

SEN, Av. das Nações, Qd. 801 – Lote 2
70432-900 – Brasília/DF
Phone: +55 61 3321-4487/3994 3326-2288
<http://www.marrocos.com/legalidades/embaixada-marrocos-brasil/>

MÉXICO

SES, Av. das Nações, Qd. 805 – Lote 18
70412-900 – Brasília/DF
Phone: +55 61 3244-1011/1211/1411
<https://embamex.sre.gob.mx/brasil/>

MOÇAMBIQUE

SHIS QL 12 Conjunto 7 casas 9 – Lago Sul
71630-275 – Brasília/DF
Phone: +55 61 3248-4222/5319
www.mozambique.mz

MYANMAR

SHIS QI 25 Conjunto 5 casa 14 – Lago Sul
CEP: 71.660-250- Brasília/DF
Phone: +55 61 3248-3747/ 2374
<http://myanmarbsb.org/site/>

NAMÍBIA

SHIS QI.09 – Conj.08 – Casa 11 – Lago Sul
CEP: 71.625-080- Brasília/DF
Phone: +55 61 3248-6274/7621
http://www.embassyofnamibia.org.br/framesetmenu_port.htm

NICARÁGUA

SHIS QI 16 – Conjunto 04 – casa 15
71640-245 – Brasília/DF
Phone: +55 61 3248-6274 / 7621
<https://www.embaixadas.net/1/6155/Nicaragua-em-Brasilia>

NIGÉRIA

SEN , Av. das Nações, Lote 5
70459-900 – Brasília/DF
Phone: +55 61 3208-1700 / 1702
<https://www.embaixadas.net/1/21626/Nigeria-em-Brasilia>

[em-Brasilia](#)

NORUEGA

SES, Av. das Nações, Qd. 807 – Lote 28
70418-900 – Brasília/DF
Phone: +55 61 3443-8720/8722
<https://www.norway.no/pt/brasil/>

NOVA ZELÂNDIA

SHIS – QI. 09 – Cj. 16 – Cs 01
71625-160 – Brasília/DF
Phone: +55 61 3248-9900
www.nzembassy.com/brazil

ORDEM SOBERANA E MILITAR DE MALTA

W3 Norte – Qd. 507 – Bloco C
70740-535 – Brasília/DF
Phone: +55 61 3272-0402 Fax: +55 61 3347-4940
foreign.gov.mt/en/Representations/Maltese-Representations/Pages/Mission-Details.aspx?country=BR

PALESTINA

SHIS QI 9 – conj. 6 – casa 2
71625-060 – Brasília/DF
Phone: +55 61 3248-4760
<https://www.embaixadas.net/1/25583/Palestina-em-Brasilia>
Email: embaixadapalestina@terra.com.br

PERU

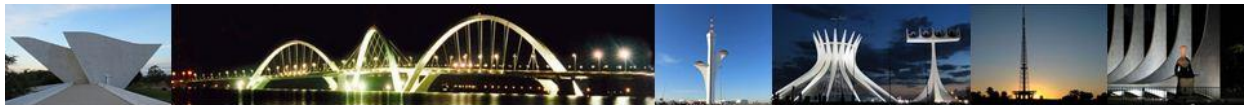
SES , Av. das Nações, Qd. 811 – Lote 43
70428-900 – Brasília/DF
Phone: +55 61 3242-9435/9835/9933
www.embperu.org.br

POLÔNIA

SES , Av. das Nações, Qd. 809 – Lote 33
70423-900 – Brasília/DF
Phone: +55 61 3212-8000
<https://brasilia.msz.gov.pl/pt/>

PORTUGAL

SES , Av. das Nações, Qd. 801 – Lote 2
70402-900 – Brasília/DF



Phone: +55 61 3032-9600

www.embaixadadeportugal.org.br

REPÚBLICA DOMINICANA

SHIS QL 6 Conjunto 7 casas 2 – Lago Sul

CEP: 71.620-075- Brasília/DF

Phone: +55 61 3248-1405

E-mail: embaixada@republicadominicana.org.br

REPÚBLICA TCHECA

SES Via L3 Sul – Qd. 805 – Lote 21

CEP: 70200-901- Brasília/DF

Phone: +55 61 3242-7785/7905

www.mzv.cz/brasil

ROMÊNIA

SEN , Av. das Nações, Lote 6

70456-900 – Brasília/DF

Phone: +55 61 3226-0746/ 3225-8992

<http://brasil.mae.ro/en>

RÚSSIA

SES , Av. das Nações, Qd. 801 – Lote A

70476-900 – Brasília/DF

Phone: +55 61 3223-3094/4094

https://brazil.mid.ru/web/brasil_pt

SANTA SÉ (Estado Eclesiástico)

SES , Av. das Nações, Qd. 801 – Lote 1

70401-900 – Brasília/DF

Phone: +55 61 3223-0794/0916

Email: nunapost@solar.com.br

SÉRVIA E MONTENEGRO

SES Avenida das Nações, Quadra 803, Lote 15

70409-900 – Brasília/DF

Phone: +55 61 3223-7272

<http://brasil.mfa.gov.rs/news.php>

SÍRIA

SEN , Av. das Nações, Lote 11

70434-900 – Brasília/DF

Phone: +55 61 3226-1260/0970

Fax: +55 61 3223-2595

SRI LANKA

SHIS QI 13 Conjunto 13 casas 01 – Lago Sul

CEP: 71.635-130- Brasília/DF

Phone: +55 61 3248-2701/6774

www.consulanka.org.br

SUÉCIA

SES , Av. das Nações, Qd. 807 – Lote 29

70419-900 – Brasília/DF

Phone: +55 61 3443-1444 +55 61 3442-5200

www.swedenabroad.com/brasil

SUÍÇA

SES , Av. das Nações, Qd. 811 – Lote 41

70448-900 – Brasília/DF

Phone: +55 61 3443-5500 / 3922 / 3934 / 3969

www.dfae.admin.ch/brasil

TRINIDAD E TOBAGO

SHIS QL 2 – conj. 2 – casa 1

71665-028 – Brasília/DF

Phone: +55 61 3365-3466/1132/3572

E-mail: trinbagoemb@gmail.com

PANAMÁ

SES Avenida das Nações quadra 803 lote 9

CEP: 70.200-030- Brasília/DF

Phone: +55 61 3248-7309/ 7423 / 3323-6177

<http://www.panaembabrasil.com.br/>

PAQUISTÃO

SHIS QL 12 – Conjunto 2 – casa 19

71630-225 – Brasília/DF

Phone: +55 61 3364-1632/1634

<https://www.embaixadas.net/1/10929/Paquistao-em-Brasilia>

PARAGUAI

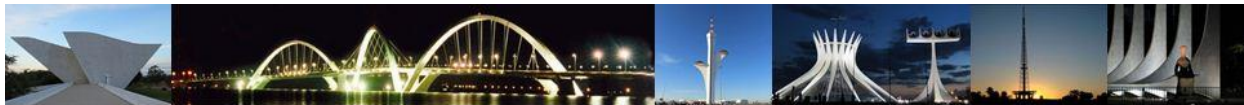
SES , Av. das Nações, Qd. 811 – Lote 42

70427-900 – Brasília/DF

Phone: +55 61 342-3732/ 3244-9449/ 8649

<https://www.embaixadas.net/1/12762/Paraguai-em-Brasilia>

E-mail: secretaria@embaparaguai.org.br

**REINO UNIDO**

SES , Av. das Nações, Qd. 801 – Conjunto K –
Lote 8

70200-010 – Brasília/DF

Phone: +55 61 3225-2710/2745

www.uk.org.br

SENEGAL

SEN , Av. das Nações, Lote 18

70800-400 – Brasília/DF

Phone: +55 61 3223-6110/3322-7124

www.senebrasil.org.br

SUDÃO

SHIS – Ql.11 Conjunto 05 – Casa 13

71625-250 – Brasília/DF

Phone: +55 61 3248-4835/4834

<https://www.embaixadas.net/1/21645/Sudao-em-Brasilia>

SURINAME

SHIS Ql 9 – conj. 8 – casa 24

71625-080 – Brasília/DF

Phone: +55 61 3248-3595/6706

<https://www.embaixadas.net/1/21646/Suriname-em-Brasilia>

E-mail: surinameemb@terra.com.br

TAILÂNDIA

SEN , Av. das Nações, Lote 10

70433-900 – Brasília/DF

Phone: +55 61 3224-6943

<http://thaiembassybrazil.com/pt/>

TUNÍSIA

SHIS Ql 11 Conjunto 6 casas 6 – Lago Sul

71625-260 – Brasília/DF

Phone: +55 61 3248-7277/7366

<https://www.embaixadas.net/1/21647/Tunisia-em-Brasilia>

TURQUIA

SES , Av. das Nações, Qd. 805 – Lote 23

70452-900 – Brasília/DF

Phone: +55 61 3242-1850/3244-4840

<http://brasil.emb.mfa.gov.tr/Mission>

UCRÂNIA

SHIS QL 05 – Conjunto 04 – casa 02

71615-040 – Brasília/DF

Phone: +55 61 3365-1457/ 3889

<https://brazil.mfa.gov.ua/pt/>

UNIÃO EUROPÉIA

SHIS – Ql. 07 – Bloco A – Lago Sul

71615-205- Brasília/DF

Phone: +55 61 2104-3122

https://eeas.europa.eu/delegations/brazil_en

URUGUAI

SES, Av. das Nações, Qd. 803 – Lote 14

70450-900 – Brasília/DF

Phone: +55 61 3322-1200/4533/1785 / 4528

www.emburuguai.org.br

VENEZUELA

SES, Av. das Nações, Qd. 803 – Lote 13

70451-900 – Brasília/DF

Phone: +55 61 3322-1011/2101-1011

<http://brasil.embajada.gob.ve/>

ZÂMBIA

SHIS QL 10 Conjunto 6 casa 10 Lago Sul

71630-065 – Brasília

Phone: +55 61 3248-3494 / +55 61 3248-3277

<https://www.embaixadas.net/1/25570/Zambia-em-Brasilia>

Email: zambiaembassybr@yahoo.com

ZIMBABUE

SHIS Ql 3 Conj. 10 Casa 13 Brasília

Phone: +55 61 365-4801 / +55 61 3365-4802

<https://www.embaixadas.net/1/21649/Zimbabue-em-Brasilia>



Hair Dresser & Manicure

- Hélio Diff Coiffeur – SHIS QL 08, Conj.01, Casa 03. Phone: +55 61 3364-2000 / Shopping Iguatemi. Phone: +55 61 32020070. / Pier 21. Phone: +55 61 3223 -3232. / Liberty Mall. Phone: +55 61 3327–2242/ Terraço Shopping. Phone: +55 61 3362 – 7755. <http://heliodiff.com.br>
- Maurizio Hair and Music* – SHIS QI 9/11, Lote M, Loja 25/28. Phone: +55 61 3364-2825/1557.
- Ricardo Maia Hair and Make-up – SHIS, QI 7, Bloco D, Loja 12. – Phone: +55 61 3248-3141/1525.
- Spé, O Spa do Pé – SHIS, QI 11, Bloco R, Sala 209 (behind Deck Brasil). Phone: +55 61 3364-6208 / 3364-4880. <http://spadope.com.br>

Health & Medical Information

Acclimatization – Too much exposure to the sun can be very dangerous – especially for children. Even on overcast days it is possible to get sunburned. The acute effects are sun burn, and the chronic effects are degenerative changes, pre-malignant and malignant lesions. Use a good sunscreen. Wear light-colored cotton clothing, and when enjoying your free-time, a hat or a cap. The weather in Brasília is drier from May to October, especially in August and September. Low humidity can provoke some symptoms if you are not used to it: headaches, dizziness, dry skin and mouth, nose bleeding, pulmonary allergies. You can avoid those symptoms simply by drinking plenty of water.

Drinking Water – At home, drink filtered water. When dining out, we suggest you order bottled mineral water, either sparkling (*com gás*) or still (*sem gás*). Make sure the bottles are opened in your presence. Beware of ice cubes; they are only as safe as the water that they are made with. Bottled and canned beer, soft drinks (*refrigerantes*), tea and coffee are safe. Although the tap water in Brasília is safe, it is not potable.



Hospitals, Image Clinics & Emergency

Ambulance service – VIDA – 24/7 - Service with nurses and some English-speaking doctors on call. The phone number is **+55 61 3248-3030**. They will bring you to the hospital of your choice; recommended ones are as follows:

- **Clinical Janice Lamas** – They have several image exams, such as bone mineral density, ultra sound, digital mammography and biopsy. Dra. Janice Lamas - Centro Clínico Oswaldo Cruz - SHLS 716, Bloco F, Sala 509. Phone: +55 61 3213-5161. www.janicelamas.com.br
- **Clínica Villas Boas** – Image exams – SHLS 716, Conjunto N, Bloco D. Phone: +55 61 2191-5050. www.clinicavillasboas.com.br
- **Clínica Santa Agatha** – Image exams. SHLS 716, Conjunto L, Sala 107. Phone: +55 61 3346-2828. www.santaagata.com.br
- **Hospital Brasília** – SHIS, QI 15, Tr. 5, Lote G, Lago Sul. Phone: +55 61 3248-9000. www.hospitalbrasilia.com.br
- **Hospital de Base** – SMGS AE 101 (between W3 Sul and Eixo W). Phone: +55 61 3325-4446/5067/4522.
- **Hospital Santa Lúcia** –SHLS 716, Conjunto C. Phone: +55 61 3445-0000. www.santalucia.com.br

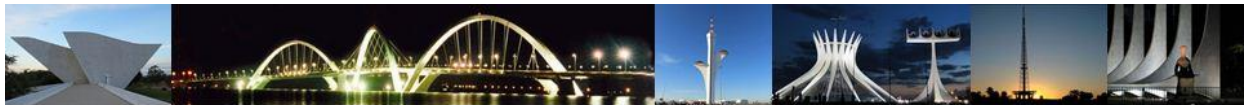
Pharmacies

Pharmacies' Street – CLS 102, Asa Sul – You will find several pharmacies; some stays open all night. Most pharmacies deliver.

- **Dias da Cruz** – Custom made formulas and natural medicine – CLS 102, Bloco B, Loja 31. Phone: +55 61 3225-5013.



- Distrital Drogaria – CLS 102, Bloco C, Loja. 19, Lago Sul. Phone: +55 61 3226-1415 /. Phone: +55 61 3364-2828 / Conjunto Nacional. Phone: +55 61 3328-0707.
- Droga Fuji. Phone: +55 61 3204-0161. www.drogafuji.com.br
- Drogaria Pague Menos. Phone: +55 61 3244-0015. <http://paguemenos.com.br>
- Drogaria do Rosário. Phone: +55 61 3212-1000.
- Drogasil - Cls 111 Bl C s/n Lj 6. Phone: +55 61 3346-8161. www.drogasil.com.br
- Farmacotécnica – Custom made formulas and natural medicine – CLS 302. Phone: +55 61 3223-2838 / Centro Médico de Brasília. Phone: +55 61 3245-7656 / Centro Clínico Norte. Phone: +55 61 3272-4833. www.farmacotecnica.com.br
- LigMed – CRS 513 (W3 Sul), Bloco A, Loja 41 – Phone: +55 61 4002-4400.
- Medicare (Custom made formulas) – CLN 402, Bloco C, Loja 08/12, +55 61 3962-5033.



Religious Services



The Pure Land Buddhist Temple – Situated in Asa Sul (EQS 315/316), it is a replica of a Japanese temple, the Temple Fukui. Its interior is golden and houses a huge statue of Buddha. It offers different hours for meditation. Phone: +55 61 3245-2469.
www.terrapuradf.org.br

Catholic Churches – find a church: www.arquidiocesedebrasil.org.br

- **Church of the Later Day / Mormons** – SGAS 913, Módulo 59. Phone: +55 61 3245-1319. Sunday at 9 a.m. and 4 p.m. SHIS, QI 21, AE. Sunday Sacrament Meeting 9 a.m. Sunday School at 10 a.m. Relief Society at 10:50 a.m. Temporarily closed for renovation.
- **Greek Orthodox Church** – SHIS QI 9, lote P – Brasília. Phone: +55 613248-282.
- **Greek Orthodox Church of the Mother of God** – SGAN Q. 910, Módulo "B". Phone: +55 61 3272-1861/ 3274-0929.
- **International Baptist Church of Brasília** – SHIS, QI 9, AE C. Phone: +55 61 3248-2685/ 99695-0891. Cult hours: Sunday Bible Study at 10 a.m. (for adults and children). Sunday worship at 11:00 a.m.
- **Jewish Community and Cultural Center / Associação Cultural Israelita de Brasília** – EQN 305/306, Bloco A. Phone: +55 61 3273-8255. Services every Friday at 6:45 P.M., Havdelah Saturdays at 5 P.M. Services are in Portuguese & Hebrew. E-mail: acib-df@brturbo.com.br. Website: www.acibdf.com.br



- **Mosque of the Islamic Center in Brazil** - Only mosque in Brasilia, it occupies an area of 2,800 m (9,186 feet). Built in authentic Arabic architectural style, it has a tower from where, in Islam, the priest calls the faithful to the five daily prayers. Address: SGAN 912 (W5 Norte).
- **Good Will Temple (*Templo da Boa Vontade*)**



Believe it or not, this is the most visited place in Brasília. Constructed in the form of a seven-sided pyramid, the temple stands 21 meters high.

One of the attractions is the crystal in the main hall, which weighs 21 kilos, is 40 centimeters tall and is located at the apex of the pyramid. Below the crystal, visitors follow a spiral route in search of energy through prayer and meditation.

There are also a couple of interesting areas in the temple, including an Egyptian room, a hall displaying portraits of the people who have had a changing effect on humanity, and an art gallery. In the annexed building there is an auditorium and a library. SGAS 915 (W5 Sul) – Lote 7. Phone: +55 61 3245-1070. Opens Daily, 24 hours. <https://www.tbv.com.br/>

- **The Church of the Resurrection** (Episcopal/Anglican) / Igreja da Ressureição – EQS 309/310. Phone: +55 61 3242-6857/ 244-7983/ 443-4305. Sundays, English service at 9:30 a.m.; Portuguese service at 11:30 a.m. <http://dab.ieab.org.br/information-in-english>
- **Union Church Brasília or Lutheran Church (Igreja Luterana)** – SQS 405/406. Phone: +55 61 3567-8602. Sunday worship in English at 11:15 a.m.



Rental - Cars

- Flytour – Partners with the World Bank Brasilia Office. Phone: +55 11 4506-7766. www.flytour.com.br/
- Avis – Aeroporto Internacional de Brasília, Setor de Locadoras - Phone: +55 61 3364-9904. www.avis.com.br
- Hertz – Phone: +55 61 3386-5151/3365-5151. www.hertz.com.br
- Localiza – Aeroporto Internacional de Brasília, Setor de Locadoras, and SCN, Quadra 1, Edifício Number One, right next door from the World Bank Office – Call Center: 0800-99 2000 / Phone: +55 61 3365-1616. www.localiza.com.br
- Movidá – Aeroporto Internacional de Brasília, S/N, Setor de Locadoras, lote 06. Phone : +55 61 3364-9681. www.movida.com.br/lojas/28/distrito-federal-brasilia-aeroporto
- VIP Line – SHC Sul EQ 102/103, Bloco A, Loja. 34. Phone: +55 61 3223-3105. www.vipcars.com



Restaurants

To find restaurants in Brasília you can go directly to:

<https://veja.abril.com.br/entretenimento/os-melhores-restaurantes-variados-de-brasilia/>

Ice Cream

- Cremosité – CLS 104 Bloco A, Loja 9 Phone: +55 61 3325-0329.
- Freddissimo Gelateria – SCN, Quadra.05, Bloco A, Loja 276C. Phone: +55 61 3964-3505.
- Frutos de Goiás – Various stores throughout Brasilia. www.frutosdegoias.com.br
- Helados Monterrey – Park Shopping
- La Paleta – Pontão do Lago Sul
- Los Paleteros – Conjunto Nacional de Brasília-
- Mesclattino – CLN 107, Bloco D, Loja 54 Phone: +55 61 3321-9856.
- Mex Paeteria – Shopping Center Pátio Brasil (W3 Sul)
- Palato – CLN 309, Bloco A, Loja 28. Phone: +55 61 3274-2258.
- Palazzo – SCRN 706/707, Bloco E, Loja 18. Phone: +55 61 3202-9677.
- Paletas Mexicanas
- Saborella – CLN 112, Bloco C, Loja 38 and Casa Park. Phone: +55 61 3340-4894 e. www.saborella.net
- Sorbê Sorvetes Artesanais – CLN 405 Bloco C, Loja 41 Phone: +55 61 3447-4158.

Shopping Malls

Brasília Shopping
SCN, Quadra 05, Bloco A
Phone: +55 61 2109-2122
<http://brasiliashopping.com.br/?lang=en>

Boulevard Shopping Brasília
Setor Terminal Norte Conjunto J
Phone: +55 61 3448-3300
<http://www.boulevardbrasilia.com.br/>

Conjunto Nacional
SDN, CNB Conjunto A
Phone: +55 61 2106-9700

www.cnbshopping.com.br

Iguatemi Shopping
CA 4 – Lago Norte
Phone: +55 61 3577-5000
<https://iguatemi.com.br/brasilia/>

Liberty Mall
SCN, Qd. 2, Bloco "D"
Phone: +55 61 3326 2602. FAX: +55 61 3328 8915
www.libertymall.com.br



Park Shopping
SAI SO, Lote 6580, Loja 301 – Guar
Phone: +55 61 3361-6677
www.parkshopping.com.br

Ptio Brasil Shopping
SCS, Quadra 07

Phone: 2107-7400
www.patiobrasil.com.br

Shopping Pier 21
SCES Trecho 02, Conjunto 32/Parte
Phone: +55 61 3223-2100.
www.pier21.com.br/

Supermarkets

- Armazm do Lago – SHIN EPPN, QI 13/14, Loja 30. Phone: +55 61 3577-4141.
- Big Box Supermercado. www.bigbox.com.br
- Carrefour. Find a store: www.carrefour.com.br
- Comper – www.comper.com.br
- OBA – www.grupooba.com.br
- Po de Augar – www.paodeacucar.com.br

Taxi

Braslia has taxi services that you can order through applications on your smart phone. Look up on Google:

- Braslia Rdio Taxi - Phone: +55 61 3223-3060 / 3344-1000
- Coobras Rdio Taxi – Phone: +55 61 3322-9000 / 3224-1000
- Expresso Rdio Taxi – Phone: +55 61 3321-8181
- Rdio Taxi Alvorada – + 55 61 3321-3030 (These service offers 20% discount, but expect to wait a bit more)



Tourism, Leisure Out Doors Activities in Brasília

Fairs

Antiques, Arts and Crafts Fairs

There are some antique fairs that happen during the weekends at the Brasília Design Center, Casa Park, and every last weekend, in the common area of the Gilberto Salomão Center in Lago Sul (QI 5). It's a great place for antique and faux-antique furniture and house decorations. There are two other traditional fairs in town for Arts and Crafts: [Feira da Lua](#) and [BSB Mix](#), which take place periodically, either on week-ends or holidays. These fairs rotate among shopping areas or open spaces in Brasília. Their schedule is largely announced where they may take place each weekend.

TV Tower Fair (Feira da Torre) – Arts and Crafts: Weekends and holidays from 8 a.m. to 6 p.m. Eixo Monumental Oeste.

Guará Fair (Feira do Guará) – Permanent Fair: Clothes and apparel, food and spices. Location: Área Especial, Guará II. Phone: +55 61 3382.2323.

Picnic Fair – Art, Fashion, Music, Gastronomy. Local: Most times it takes place near parking lot no. 4 at the Sarah Kubitschek city park, but locations may vary. <http://picnik.art.br/>





Weekend Trips

Ecological and Historical Tourism

Águas Emendadas

This environmental station protects a unique natural feature: a single spring marks the spot where the Amazon and River Plate basins touch. The spring runs in two opposite directions, north to join the Tocantins river and south to meet the Paraná river. The station itself has an area of 10,500 hectares of *cerrado*, where rare and endangered endemic animals live, and functions as an important ecological corridor linking the fauna and flora of the two most important river basins in South America.

Getting there: Entrance requires a special permit from the Federal District's Environmental Protection Secretariat. The station is located near the city of Planaltina, some 50 km from Brasília.

Caldas Novas and Rio Quente - Thermal Springs



water varies between 34 and 57 °C.

Caldas Novas is a Brazilian city and municipality in the state of Goiás. It is the largest hydro-thermal resort in the world. There are 86 active wells in Caldas Novas, the temperature of the

The first references to the hot water of this region were published in Spain in 1545. In 1722, Bartolomeu Bueno da Silva, son of the famous *bandeirante*, Anhangüera, turning at the trail blazed by his father years before, discovered the thermal springs that form the Rio Quente. These were called Caldas Velhas and were where the Rio Quente Resorts is now located.

Another great attraction of Caldas Novas is Ecotourism, since the city is located near the Corumbá River and the Serra de Caldas where there is a natural park - Parque Estadual de Caldas



Novas. In the surrounding area there is a reservoir called Lago de Corumbá with 64 square kilometers damming the Corumbá; and the Rio Quente - which has natural warm water.

Rio Quente - One of the largest hot water resort complexes in the world - Rio Quente Resorts - is located 20 kilometers to the west of Caldas in the municipality of Rio Quente. With seven hotels, a convention center, and 500 square kilometers of space it receives more than 1 million tourists a year. www.rioquenteresorts.com.br

Chapada dos Veadeiros, Alto Paraíso and Vila de São Jorge



Tourists arriving at the small town of Alto Paraíso de Goiás, located 260 km from Brasília, and doorway to the Chapada dos Veadeiros National Park, are unanimous in acknowledging that the place is indeed entitled to its name *Alto Paraíso* (High Paradise). The region, of outstanding beauty, is made up of wide plateaus and a hydrographic system which offers visitors various waterfalls and crystal-clear springs, excellent for bathing. The park is supervised by IBAMA. The average annual temperature varies between 24°C and 26°C, and the vegetation is rich and diverse, featuring plains of buritis, river-side bushes lining the banks of rivers, tall trees, and typical high-altitude plants such as bromeliads, orchids and ever-greens. A walk of about 5 km leads visitors to the canyons and the *Carioca* waterfalls. Among the most popular falls are the *João de Melo*, *Almácegas* and the *Pequizeiro* and *Vale da Lua* (Moon Valley – photo).

Access to the city is through highways BR-020 and GO-118. There are interstate buses at the bus station. Once in Alto Paraíso, another bus will take visitors to Vila São Jorge, located in the Park. Lodging, inns, camp grounds, restaurants and fast food outlets can be found in the Vila. For further information, contact: +55 61 646-1109/1136 / +55 62 281-6549.



Hotel Pousada Água Esperança – in Vila de São Jorge, (Chapada dos Veadeiros) is a 6-room small hotel.

Chapada Imperial

Chapada Imperial is located less than 50 km from the center of Brasília in the highest place of the Distrito Federal (1.347 m). It has several natural swimming pools, 33 waterfalls and is situated at the *Ribeirão Dois Irmãos* (Dois Irmãos River). There are nice walking trails, tracking, rappel, mountain bike, tree-climbing camping, good lunch options, and overnight accommodations in small cabins.



Reservations: +55 61 99984-4437 or 99965-2461. www.chapadaimperial.com.br

Corumbá

The Corumbá River falls over a wall of rock 50 meters high forming a huge pool at the bottom, as well as rapids, showers and pools of crystal-clear water, with small, white sand beaches. In the forest near the rock wall you can see capuchin monkeys.

The rock that forms the wall has a huge crack 30 meters deep, which can be seen from another rock in front of the waterfall. The area is private property and an entrance fee is charged. There is infrastructure for camping and sightseeing. Near the waterfall, on the banks of the Corumbá and Rasgão Rivers, there is the Pireneus Cabanas, on a farm which offers entertainment and tourism. The falls are near the city of Corumbá, Goiás, founded in the XVIII century by the *Bandeirantes* who explored the interior of the country looking for gold.

Getting there: take the main road to Taguatinga and BR-070 until the town of Cocalzinho; from there you take BR-414. It is 150 km from Brasília.



Cristalina

The city was born with the name *São Sebastião dos Cristais*, a reference to the extensive crystal beds discovered by the *Bandeirante* explorers in the XVIII century. In 1918 it earned its administrative autonomy and changed its name to Cristalina.



Crystals are still abundant in the region, making their trade one of the most important economic activities. The region also has several rivers, which form waterfalls and natural pools such as *Cachoeira do Arrojado* and *Serra Lindo dos Topázios* (q.v.). Other tourist attractions include the *Pedra do Chapéu do Sol* and the *Pedra dos Amores*, both in the old gem prospecting site of Serra Velha; the São Sebastião church; the City Museum and a private museum with a collection of historic Brazilian coins. Cristalina has a population of about 24,000, a quarter of which lives in the rural area. The city's main festivals are: Padroeiro São Sebastião (January 20); the Rural Week in May, with agricultural expositions and country music shows; and the Cristalina Gem Prospector Day, on May 16. Getting there: Cristalina is 120 km from Brasília, it can be reached by the BR-040, southern exit.

Formosa Lake (*Lagoa Formosa*)



The crystal-clear waters of this lake are renewed by underground water. It is almost 18 km long and 50 meters wide, with an average depth of 10 meters, and is located between two hills. There are small beaches appropriate for bathing along the banks, which also makes it a good place for other water sports.



Around the lake are weekend homes and the Lagoatur Club, which has a restaurant, cabins to rent, boats, pedal boats and courts for different sports.

Getting there: It is 65km from Brasília, down BR-020 and BR-030 until reaching DF-15 and GO-118.

Goiás Velho

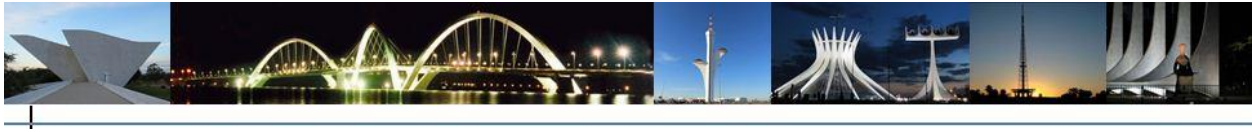
It is a small city and municipality in the state of Goiás in Brazil. The population was 24,072 (2007 count) in a total area of 3,108 km² (2002). It is the former capital of the state and preserves much of its colonial heritage. In 2002, it became a UNESCO World Heritage. Goiás Velho is 290Km from Brasília. Goiás Velho is rich in History and is the home of Cora Coralina, an important poet recognized in her late years for her literary quality.



Itiquira



With a height of 168 meters, this is one of the tallest free falls of water in Brazil. After the main drop, the river forms a sequence of smaller waterfalls and rapids with pools. It is found in rugged terrain covered by a dense forest, with several mineral water springs. The infrastructure is good and includes restaurants, bars, snack bars, running water pools, cottages to rent and a picnic area. It is located in a private property and works like a club, where members do not pay but non-members do. Around the falls there is a tourist complex covering a vast area, with a camping site with capacity for 500



tents, a canteen, bathrooms, sinks for dish-washing and for washing clothes. It is in the Goiás town of Formosa, 110 km from Brasília.

Getting there: leave the city from the North Exit and take BR-020 and 030 to Formosa, there you turn off on a 36-km paved road. It is open Saturday, Sunday and holidays and there is a bus which goes there direct from the Brasília Bus Station, leaving at 7 a.m. and returning at 5 p.m. For general information, call +55 61 3503-5108/ 3225-6601. For reservations, call +55 61 3321-1082.

Linda Serra dos Topázios

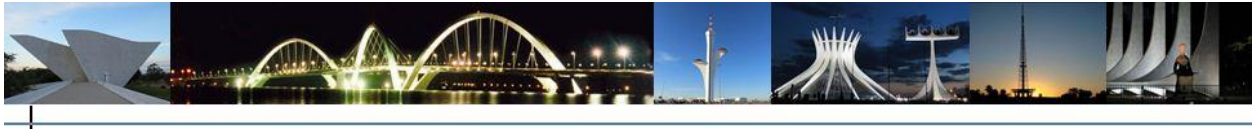


This site is a private Natural Reservation, with an IBAMA diploma and technical support from the “Pro-Nature Foundation” (FUNATURA). Considered an energetic paradise in the crystal region, it is located 11 km away from Cristalina and 100 km from Brasília. There are 500 acres of

native cerrado, animals, birds and 20 crystal clear waterfalls. A permit is required at the entrance. Its name means “beautiful topaz hill”.

Mestre d’Armas Lake

This is the only natural lake in the Federal District. Wild animals find refuge on its banks, which are covered with typical savanna vegetation like small trees and buriti palms. The Cruls Commission passed by this lake in 1892. It has a 5-km perimeter and is approximately 800 meters wide. Getting there: It is located 6 km from Planaltina and 39km from Brasília, and can be reached by: going North, on BR-020 up to the intersection with DF-13, right after the entrance to Planaltina; turn left and go 3 km down a dirt road.



Pipiripau



This is a public area where the Pipiripau Creek forms rapids and waterfalls for some 100 meters. The highest water fall is about a meter and a half tall and forms a natural pool at the bottom. Getting there: Pipiripau is 58 km from the city, near Planaltina, out the North Exit (BR-020) up to km 19, where you take a right, following DF 410 and the signs for the Escola Fazendária. At the end of DF 410, there are seven kilometers of dirt road. The entrance is in front of the sign reading “Taquara”.



Pirenópolis

Surrounded by lush vegetation and 26 waterfalls, this small town has many tourist attractions. One is Babilônia Farm, 26 km from the center, where there is an old plantation house and a XVIII century sugar mill. Some of the most visited spots in Pirenópolis are the mother church, the oldest in Goiás, built between 1728 and 1732; Our Lady of Bonfim Church, built in 1750; Our Lady of Carmo Church which



was transformed into a Sacred Arts Museum with its images from Portugal; Pirenópolis Theater, built in 1899; and the house of Rua Direita, from 1852. The Almas River in the center of the city has good swimming spots.



The Feast of the Divine Holy Spirit – ***Cavalhadas***, has been held here since 1819, 45 days after Holy Week. It is an excellent exhibition of folk festivities, with jaunts accompanied by music and song, remembering the battles between Christians and the Moors. Pirenópolis has some 6,700 people living in the city and another 22,700 in the rural zone. It has

several hotels, lodges and restaurants and many stores selling local handicrafts in silver, stone, wood, cloth and ceramics. The City is very close to Brasília and holds many interesting events throughout the year. From Brasília: 168 km from Brasília down BR-070, passing through Águas Lindas. <https://pirenopolis.tur.br/>



Poço Azul

The river which flows down the Vendinha Plateau breaks a quartz rock and forms a pond (*Poço Azul*, Blue Pond) with crystalline, bluish colored water. There also rapids, waterfalls and a flooded cave. The terrain is hilly and there are panoramic views of the plateau. An



admission fee is charged. Getting there: from the North Exit toward Padre Bernardo up to the end of the paved road. Then continue 14 km down a dirt road until you see a small sign indicating the entrance to the left.

Saia Velha



This is an area rich in vegetation and waterfalls, with many rapids and natural pools. There is a country club – Saia Velha Country Club, for members only – and the Saia Velha Swimming Area, with pools, a diving pool 30 meters deep, camping site, cook-out facilities, playground, nursery and mini-zoo, soccer

field, pool tables and a restaurant. There is also the Saia Velha Waterfall Tourist Complex, with pools, restaurant, snack bar, playground and horses to rent. An entrance fee is charged. The name *Saia Velha* means Old Skirt.



Getting there: Saia Velha is 35 km from Brasília down BR-040, until you reach the Solarius Monument, then turn left and follow five km down a dirt road.

São Domingos' Caves - *Terra Ronca*

São Domingos is a small town in the State of Goiás with 6,500 inhabitants. It is located near the border between the states of Goiás and Bahia, about 400 kilometers from Brasília. It is attracting a growing number of visitors due to its fantastic and diversified concentration of caverns and waterfalls, with dozens of kilometers of chambers and galleries, crossed by big underground rivers.

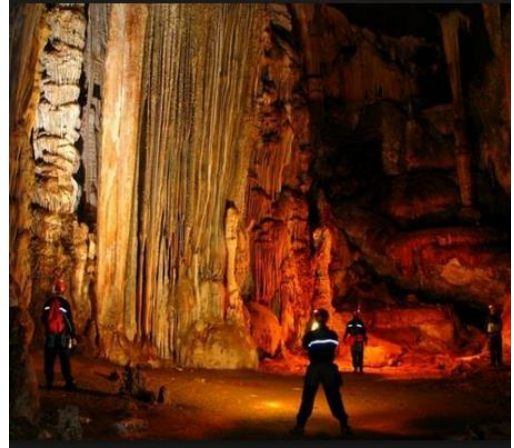


The natural beauty is associated to an exotic fauna and to surprises caused, among other phenomena, by stalagmites of up to 14 meters high and pearls made from dripping over the rocks. More than fifty caves have been catalogued, but the Geology Department at the University of Brasília estimates there are over two hundred. Five systems are already well known. São Mateus with more than 20 km, is the biggest of them. The easiest access system is Terra Ronca, used by pilgrims, especially on the day of the most important celebration in São Domingos - Bom Jesus da Lapa's cortege - to make promises, celebrate baptisms and even weddings. The best period to visit the caverns is from July to September. For more information, call +55 62 3655-1167 in São Domingos.



Tamboril Cave

This is a deep and spectacular cave, with impressive multi-colored rock formations. It runs 1.2 km into the earth, but you will only need standard equipment such as flashlights and rugged clothing to explore. Visits during the rainy season are not recommended. There is no support infrastructure near it, and visitors enter the cave at their own risk (never go alone). Getting there: Take the EPTC and BR-251 highways, 10 km from



Unai (there is a sign). After that, there are still 2 km of unpaved road and a rough stretch on foot.

Tororó

The Tororó Waterfall is located in the administrative region of Santa Maria, in the Federal District.



It is a popular spot for those who love rappel practices, hiking or just enjoy being in touch with nature. A waterfall very close to Brasília, the Salto de Tororó is 18 meters high, with stony bed of the river and a little bumpy. The landscape is an invitation to extreme sports, especially the rappel. The trails to reach the waterfall, covered by rocks of quartzite, are an attraction in themselves. The place is ideal to spend the day, whether with family or just with friends. Its waters promote sensations of coolness on hot days of the Central Plateau.

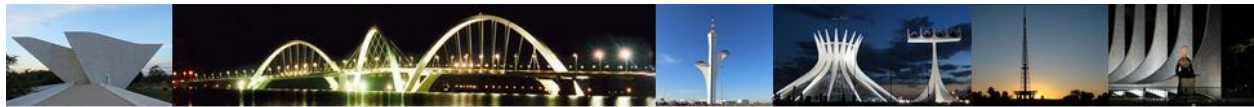
Location: From the SR-23 Lago Sul, follow the DF-140 toward Unai, Minas Gerais, for 5 km and turn right on a dirt road. 35 km far from Brasília.



Valley of the Dawn (*Vale do Amanhecer*)

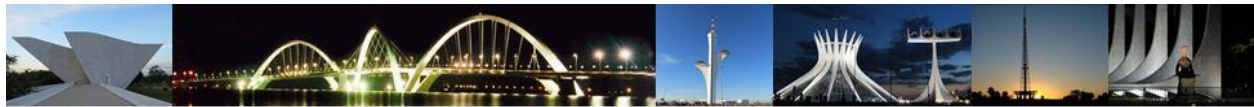
The Valley of the Dawn was founded in 1959 by Aunt Neiva (Tia Neiva), a mystic who previously worked as Brazil's first female truck driver. After a series of visions, Aunt Neiva established the Doctrine of Dawn, a syncretic Christian spiritualist religion which also draws from Egyptian, Greek, Roman, Maya, Inca, Nagô, Gypsy and other beliefs. The community welcomes visitors, who can walk around the surreal monuments and temples and witness their brightly colored ceremonies. It is located 40 km from Brasília on the BR-020.





Useful Words and Phrases

Messages – Telephone	
Who is speaking?	Quem fala?
What Time?	Que horas?
Where?	Onde?
Please, take a message	Por favor anote o recado
Extension	Ramal
Sorry, wrong number	Desculpe, foi engano...
I wish to speak to...	Quero falar com...
Can you put me through to	Pode me passar para...
One moment, please	Um momento, por favor
Shopping	
I want to choose	Quero escolher
How much does it cost?	Quanto custa?
How much does it weigh?	Quanto pesa?
I'll have half a kilo	Quero meio quilo
I'll have one Kilo	Quero um quilo
To add up	Somar (ou fazer a conta)
That's enough	Chega (está bom)
Is it ripe?	Está maduro?
Is it fresh?	Está fresco?
Is it green (unripe)?	Está verde?
Laundry	
Washing machine	Máquina de lavar
To hand wash	Lavar à mão
To scrub	Esfregar
To iron	Passar roupa
The iron	O ferro
Soap powder	Sabão em pó
Bar of soap	Sabão em barra
Stain	Mancha
Remove a stain	Tirar a mancha
To starch	Engomar
To soak	Deixar de molho
To bleach	Branquear
To fill	Encher



To turn on the tap	Abrir a torneira
To turn off the tap	Fechar a torneira
To dry	Secar
To dry-clean	Lavar a seco
To rinse in cold water	Enxaguar em água fria
To rinse in hot water	Enxaguar em água quente
Hang up to drip-dry	Pendurar para escorrer
To fold	Dobrar
To hang	Pendurar
General Household Terms	
To sweep with a broom	Varrer o chão
To keep clean	Manter limpo
To clean the bathroom	Limpar o banheiro
To tidy up	Fazer arrumação
To tidy drawers	Arrumar as gavetas
To tidy the kitchen	Arrumar a cozinha
To tidy the living room	Arrumar a sala de estar
To tidy the dining room	Arrumar a sala de jantar
To tidy the bedroom	Arrumar o quarto
To take care with/of	Tomar cuidado com
The china	A louça
The glassware	Os copos
The cutlery	Os talheres
The silver ware	A prataria
To lock the door	Trancar a porta
To put the dustbins out	Pôr o lixo lá fora
Rubbish	Lixo
It is dirty	Está sujo
This is tasty	Está gostoso
This is good	Está bom
Is this clean?	Isso está limpo?
To pick up	Apanhar
To take care	Tomar conta
To pay attention	Prestar atenção
To clean the windows	Limpar as janelas
To lay the table	Por a mesa
Dustpan and brush	A pá e a vassoura



Curiosities about Brasília

We invite you to see Brasília from different perspectives, to see a more humanized Brasília from our artists' eyes.

Initially created to house the Government of Brazil and with the important function to develop the Country interior, now Brasília is much more than that. It has its own people, its own problems and solutions, its own accent or no accent at all due to the combination of all accents. Brasília is a fusion of people from all over Brazil and from all over the world. Here is

the house of embassies and the international organizations.

Brasília has developed its own vocabulary, worth to know some words to begin with:

Baú (originally meaning chest [piece of furniture]) = bus

Buraco do tatu (armadillo hole) = Passage under the Rodoviária

Camelo (Camel) = bike

Candango = initially who came to construct Brasília: The Pioneers. Now *Brasilienses* also can be called Candangos.

Pardal (chipping sparrow) = Speed radar all over the city

Tesourinha (small scissor) = passages that goes under Eixo Rodoviário

Brasília is the synthesis of diversity and it is a melting pot.

Linha do Equador Djavan

...Céu de Brasília
traço do arquiteto
gosto tanto dela assim...

www.youtube.com/watch?v=i9PROUR8D8M

Flor do Cerrado Caetano Veloso

...Mas da próxima vez
que eu for a Brasília
Eu trago uma flor do cerrado pra
você...

CANTA A TUA QUADRA

Nicolas Behr

blocos, eixos,
quadras
senhores, esta cidade
é uma aula de geometria

Te Amo Brasília Alceu Valença

Agora conheço
Sua geografia
A pele macia
Cidade morena
Teu sexo, teu lago
Tua simetria
Até qualquer dia
Te amo Brasília...

Se teu amor foi
Hipocrisia!
Adeus Brasília
Vou morrer de saudade
Se teu amor foi
Hipocrisia!
Adeus Brasília
Vou prá outra cidade...

Coisas de Brasília Oswaldo Montenegro

Era frio e era claro
como a seca de Brasília
...Era reto e projetado
como as linhas de Brasília
...Minha canção era loucura
como a alma de Brasília...

<http://letras.mus.br/oswald-o-montenegro/82847/>

Aquarela Brasileira Martinho da Vila

...Brasília tem o seu destaque
Na arte, na beleza, arquitetura...

Eduardo e Monica Renato Russo

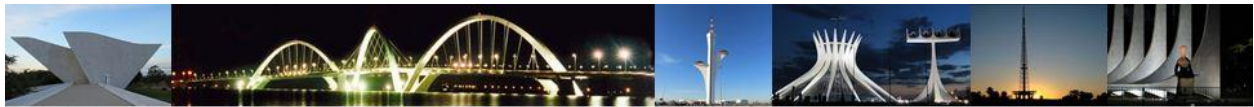
...Se encontraram então no parque da cidade
A Mônica de moto e o Eduardo de camelo...

www.youtube.com/watch?v=6ktq7rKRji4

Música Urbana Capital Inicial

...As ruas têm cheiro de gasolina e óleo diesel
Por toda plataforma, Toda a plataforma
Por toda a plataforma você não vê a torre...

<http://www.youtube.com/watch?v=SyobFwU87g8>



World Bank Group
Brazil Country Office
Administrative Officer
Brasília, DF, 2019